

**Austin-Bergstrom International Airport
Aviation Activity Report
Calendar Year 2019 vs 2018**

Combined Terminals

	8/2019	8/2018	Percent Change	1/2019 - 8/2019	1/2018 - 8/2018	Percent Change
ABIA						
Total Passenger Activity						
Domestic Enplaned Revenue	649,720	644,973	0.74	5,070,658	4,867,665	4.17
Domestic Deplaned Revenue	675,367	670,876	0.67	5,065,455	4,861,375	4.20
International Enplaned Revenue	20,567	17,250	19.23	149,420	138,879	7.59
International Deplaned Revenue	23,280	20,627	12.86	154,368	141,841	8.83
Domestic Enplaned Non-Revenue	14,607	16,861	-13.37	114,197	120,463	-5.20
Domestic Deplaned Non-Revenue	13,528	16,009	-15.50	109,502	115,350	-5.07
International Enplaned Non-Revenue	180	158	13.92	1,137	1,059	7.37
International Deplaned Non-Revenue	152	155	-1.94	1,018	878	15.95
Intl Enplaned Pre-Cleared Revenue	4,336	1,839	135.78	27,947	14,960	86.81
Intl Deplaned Pre-Cleared Revenue	4,580	2,190	109.13	27,533	15,839	73.83
Intl Enplaned Pre-Cleared Non-Revenue	58	33	75.76	329	254	29.53
Intl Deplaned Pre-Cleared Non-Revenue	71	35	102.86	351	280	25.36
South Terminal Domestic Enplaned Revenue	55,917	11,614	381.46	354,371	116,038	205.39
South Terminal Domestic Deplaned Revenue	58,981	11,346	419.84	355,608	116,685	204.76
South Terminal Domestic Enplaned Non-Revenue	166	7	2,271.43	1,146	39	2,838.46
South Terminal Domestic Deplaned Non-Revenue	236	10	2,260.00	1,453	58	2,405.17
ABIA Passenger Totals	1,521,746	1,413,983	7.62	11,434,493	10,511,663	8.78
<i>ABIA Enplaned Passenger Totals</i>	<i>745,551</i>	<i>692,735</i>	<i>7.62</i>	<i>5,719,205</i>	<i>5,259,357</i>	<i>8.74</i>
<i>ABIA Deplaned Passenger Totals</i>	<i>776,195</i>	<i>721,248</i>	<i>7.62</i>	<i>5,715,288</i>	<i>5,252,306</i>	<i>8.81</i>
<i>ABIA Domestic Passenger Totals</i>	<i>1,468,522</i>	<i>1,371,696</i>	<i>7.06</i>	<i>11,072,390</i>	<i>10,197,673</i>	<i>8.58</i>
<i>ABIA International Passenger Totals</i>	<i>53,224</i>	<i>42,287</i>	<i>25.86</i>	<i>362,103</i>	<i>313,990</i>	<i>15.32</i>
CURRENT PASSENGER RECORD = 1,643,016 RECORD SET = JULY 2019						
Total Aircraft Operations						
Air Carrier	12,579	12,074	4.18	93,927	89,530	4.91
Commuter & Air Taxi	1,110	1,385	-19.86	10,349	11,323	-8.60
Military	649	911	-28.76	6,227	7,051	-11.69
General Aviation						
Itinerant	3,413	4,162	-18.00	27,299	31,750	-14.02
Local	0	222	-100.00	508	1,153	-55.94
Total G.A.	3,413	4,384	-22.15	27,807	32,903	-15.49
Total Operations	17,751	18,754	-5.35	138,310	140,807	-1.77

**Austin-Bergstrom International Airport
Aviation Activity Report
Calendar Year 2019 vs 2018**

By Terminal

	8/2019	8/2018	Percent Change	1/2019 - 8/2019	1/2018 - 8/2018	Percent Change
<u>Barbara Jordan Terminal (BJT)</u>						
Passenger Activity						
Domestic Enplaned Revenue	649,720	644,973	0.74	5,070,658	4,867,665	4.17
Domestic Deplaned Revenue	675,367	670,876	0.67	5,065,455	4,861,375	4.20
International Enplaned Revenue	20,567	17,250	19.23	149,420	138,879	7.59
International Deplaned Revenue	23,280	20,627	12.86	154,368	141,841	8.83
Domestic Enplaned Non-Revenue	14,607	16,861	-13.37	114,197	120,463	-5.20
Domestic Deplaned Non-Revenue	13,528	16,009	-15.50	109,502	115,350	-5.07
International Enplaned Non-Revenue	180	158	13.92	1,137	1,059	7.37
International Deplaned Non-Revenue	152	155	-1.94	1,018	878	15.95
Intl Enplaned Pre-Cleared Revenue	4,336	1,839	135.78	27,947	14,960	86.81
Intl Deplaned Pre-Cleared Revenue	4,580	2,190	109.13	27,533	15,839	73.83
Intl Enplaned Pre-Cleared Non-Revenue	58	33	75.76	329	254	29.53
Intl Deplaned Pre-Cleared Non-Revenue	71	35	102.86	351	280	25.36
Barbara Jordan Terminal Passenger Totals	1,406,446	1,391,006	1.11	10,721,915	10,278,843	4.31
<i>BJT Enplaned Passenger Totals</i>	<i>689,468</i>	<i>681,114</i>	<i>1.23</i>	<i>5,363,688</i>	<i>5,143,280</i>	<i>4.29</i>
<i>BJT Deplaned Passenger Totals</i>	<i>716,978</i>	<i>709,892</i>	<i>1.00</i>	<i>5,358,227</i>	<i>5,135,563</i>	<i>4.34</i>
<i>BJT Domestic Passenger Totals</i>	<i>1,353,222</i>	<i>1,348,719</i>	<i>0.33</i>	<i>10,359,812</i>	<i>9,964,853</i>	<i>3.96</i>
<i>BJT International Passenger Totals</i>	<i>53,224</i>	<i>42,287</i>	<i>25.86</i>	<i>362,103</i>	<i>313,990</i>	<i>15.32</i>
<u>South Terminal (ST)</u>						
Passenger Activity						
South Terminal Domestic Enplaned Revenue	55,917	11,614	381.46	354,371	116,038	205.39
South Terminal Domestic Deplaned Revenue	58,981	11,346	419.84	355,608	116,685	204.76
South Terminal Domestic Enplaned Non-Revenue	166	7	2271.43	1,146	39	2838.46
South Terminal Domestic Deplaned Non-Revenue	236	10	2260.00	1,453	58	2405.17
South Terminal Passenger Totals	115,300	22,977	401.81	712,578	232,820	206.06
<i>ST Enplaned Passenger Totals</i>	<i>56,083</i>	<i>11,621</i>	<i>382.60</i>	<i>355,517</i>	<i>116,077</i>	<i>206.28</i>
<i>ST Deplaned Passenger Totals</i>	<i>59,217</i>	<i>11,356</i>	<i>421.46</i>	<i>357,061</i>	<i>116,743</i>	<i>205.85</i>

**Austin-Bergstrom International Airport
Aviation Activity Report
Calendar Year 2019 vs 2018**

	8/2019	8/2018	Percent Change	1/2019 - 8/2019	1/2018 - 8/2018	Percent Change
<u>Total Cargo Activity</u>						
Mail						
Domestic Enplaned Mail	120,937	213,274	-43.30	1,492,378	1,582,662	-5.70
Domestic Deplaned Mail	638,852	452,728	41.11	5,256,438	3,369,271	56.01
International Enplaned Mail	0	0	0.00	0	0	0.00
International Deplaned Mail	0	0	0.00	110,830	0	0.00
South Terminal-Domestic Enplaned Mail	0	0	0.00	0	0	0.00
South Terminal-Domestic Deplaned Mail	0	0	0.00	0	0	0.00
Mail Totals	759,789	666,002	14.08	6,859,646	4,951,933	38.52
Cargo						
Domestic Enplaned Cargo	4,941,533	5,411,559	-8.69	38,567,339	39,581,034	-2.56
Domestic Deplaned Cargo	6,918,006	7,337,408	-5.72	52,803,183	54,653,733	-3.39
International Enplaned Cargo	382,717	222,411	72.08	3,035,150	4,807,914	-36.87
International Deplaned Cargo	233,455	94,620	146.73	2,327,388	2,034,448	14.40
South Terminal-Domestic Enplaned Cargo	0	0	0.00	0	0	0.00
South Terminal-Domestic Deplaned Cargo	0	0	0.00	0	0	0.00
Cargo Totals	12,475,711	13,065,998	-4.52	96,733,060	101,077,129	-4.30
Belly Freight						
Domestic Enplaned Belly Freight	287,022	326,771	-12.16	2,580,264	2,421,314	6.56
Domestic Deplaned Belly Freight	451,921	530,594	-14.83	4,251,162	3,894,993	9.14
International Enplaned Belly Freight	318,493	304,185	4.70	2,588,551	2,172,449	19.15
International Deplaned Belly Freight	514,641	602,269	-14.55	4,951,226	4,645,829	6.57
South Terminal-Domestic Enplaned Belly Frght	0	0	0.00	0	0	0.00
South Terminal-Domestic Deplaned Belly Frght	0	0	0.00	0	0	0.00
Belly Freight Totals	1,572,077	1,763,819	-10.87	14,371,203	13,134,585	9.41
Cargo Totals (Mail, Cargo, Belly Freight)	14,807,577	15,495,819	-4.44	117,963,909	119,163,647	-1.01
<i>Enplaned Cargo Totals</i>	<i>6,050,702</i>	<i>6,478,200</i>	<i>-6.60</i>	<i>48,263,682</i>	<i>50,565,373</i>	<i>-4.55</i>
<i>Deplaned Cargo Totals</i>	<i>8,756,875</i>	<i>9,017,619</i>	<i>-2.89</i>	<i>69,700,227</i>	<i>68,598,274</i>	<i>1.61</i>
<i>Domestic Cargo Totals</i>	<i>13,358,271</i>	<i>14,272,334</i>	<i>-6.40</i>	<i>104,950,764</i>	<i>105,503,007</i>	<i>-0.52</i>
<i>International Cargo Totals</i>	<i>1,449,306</i>	<i>1,223,485</i>	<i>18.46</i>	<i>13,013,145</i>	<i>13,660,640</i>	<i>-4.74</i>

CURRENT CARGO RECORD = 40,215,518

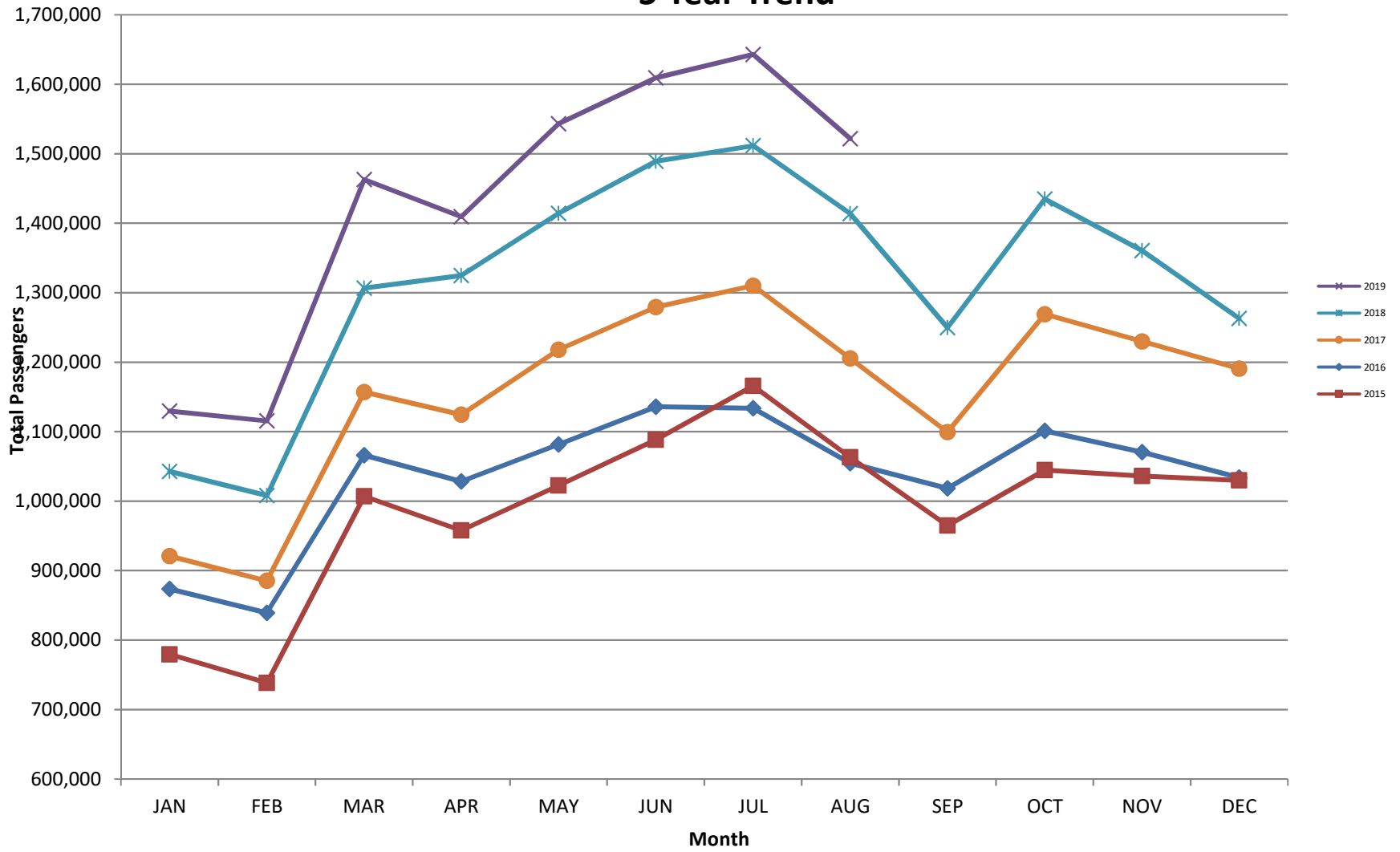
RECORD SET = MARCH 2001

AUS – Airline Codes
August 2019

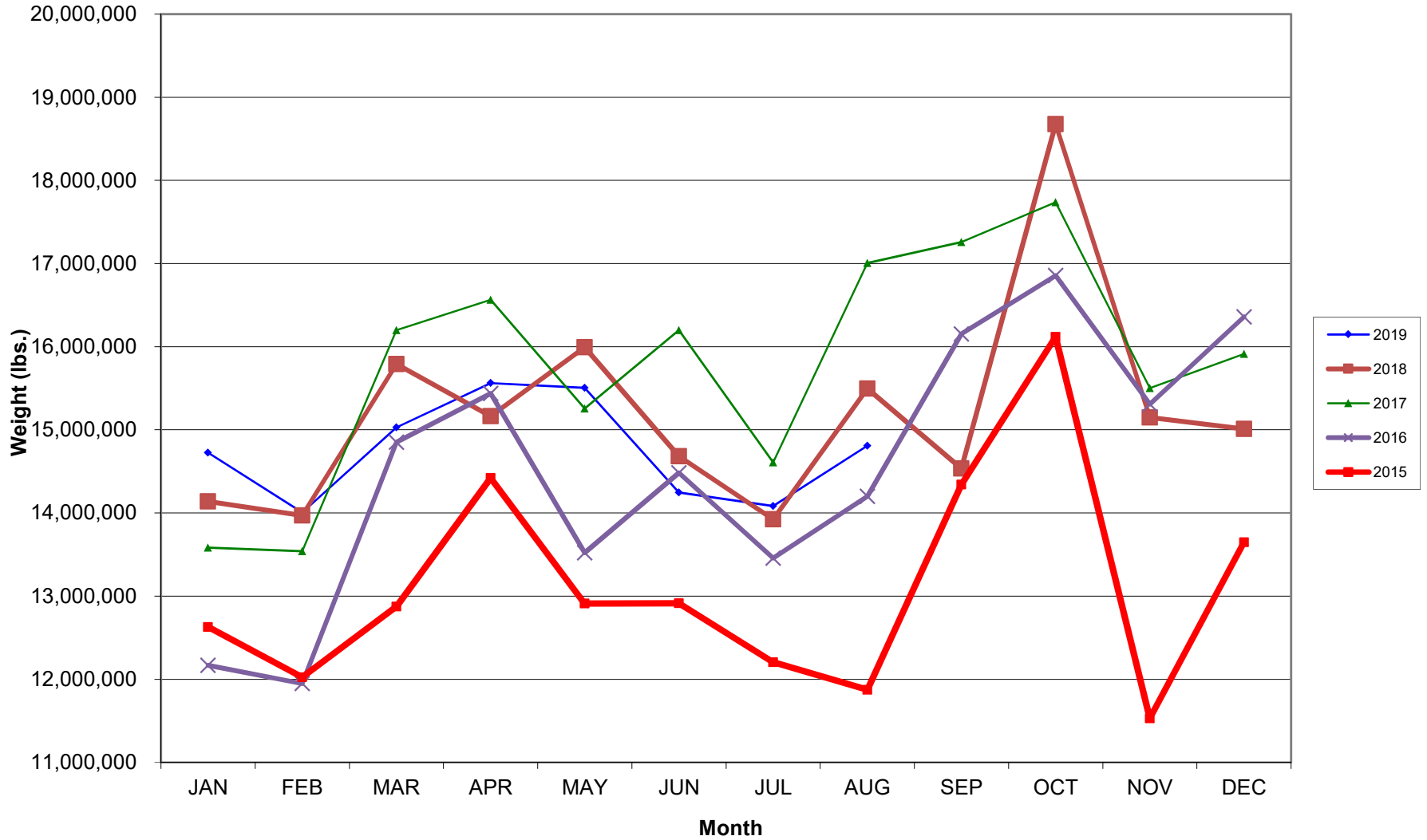
<u>Code</u>	<u>Carrier</u>
AM	Aerovias de Mexico S.A. de C.V. dba AeroMexico Airlines
AC	Air Canada
AS	Alaska Airlines, Inc.
G4	Allegiant Air, LLC
AA	American Airlines, Inc.
BA	British Airways Plc
DL	Delta Airlines
LH	Deutsche Lufthansa AG
F9	Frontier Airlines
B6	JetBlue Airways Corp.
DY	Norwegian Air UK LTD
WN	Southwest Airlines
NK	Spirit Airlines
SY	Sun Country Airlines
UA	United Airlines, Inc.
WS	WestJet Airlines

AUSTIN PASSENGER TRAFFIC

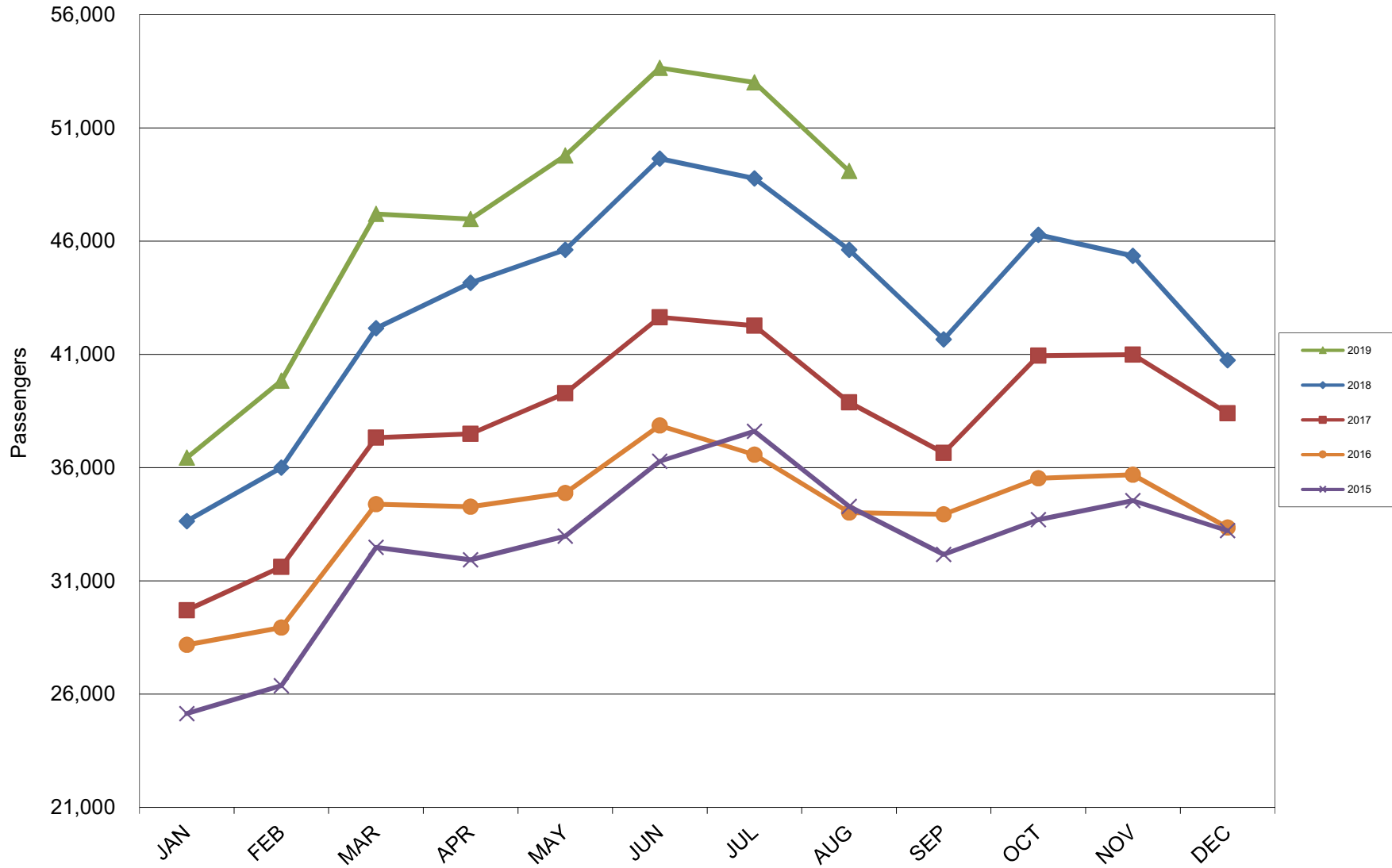
5 Year Trend



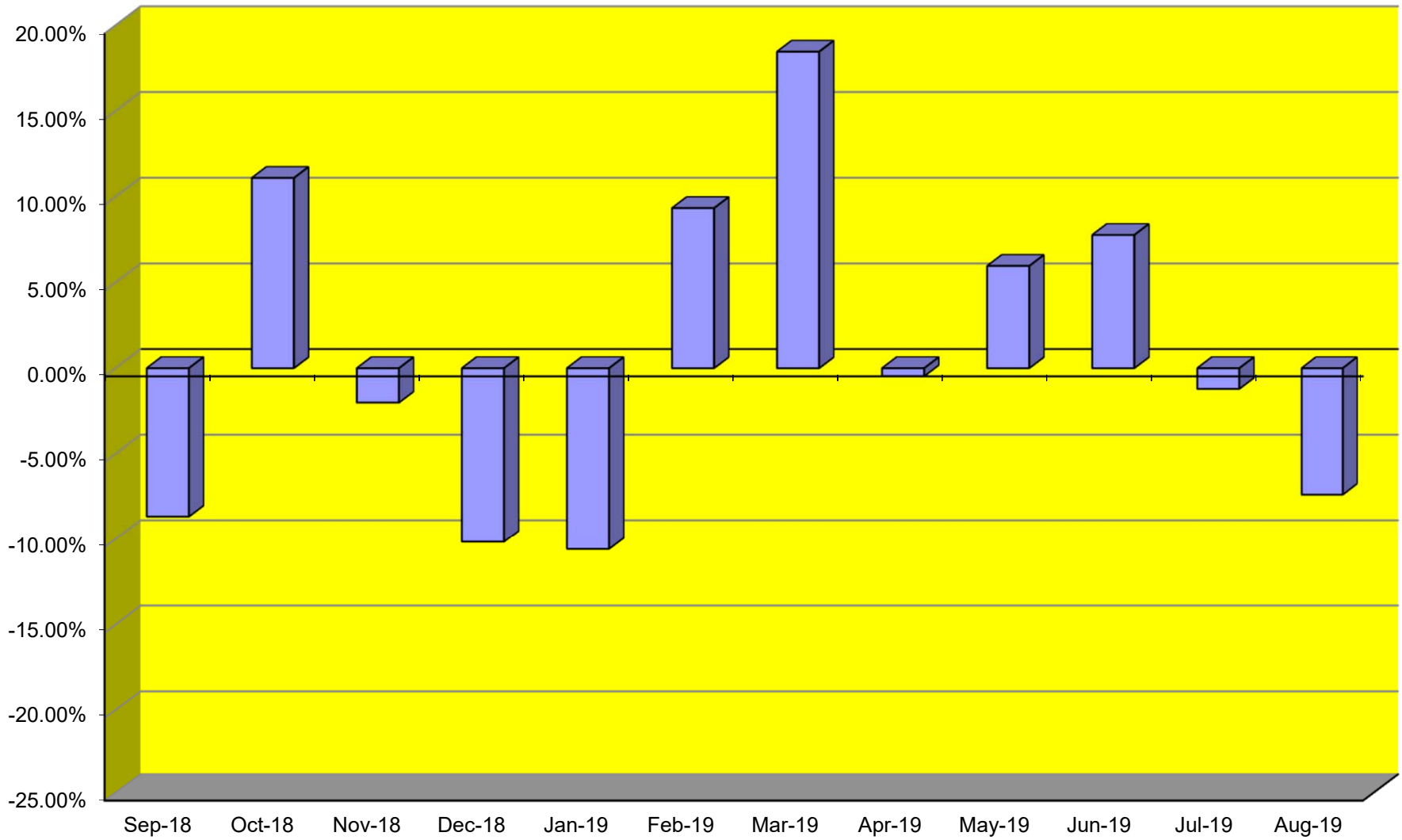
TOTAL CARGO POUNDAGE - AUSTIN, TEXAS



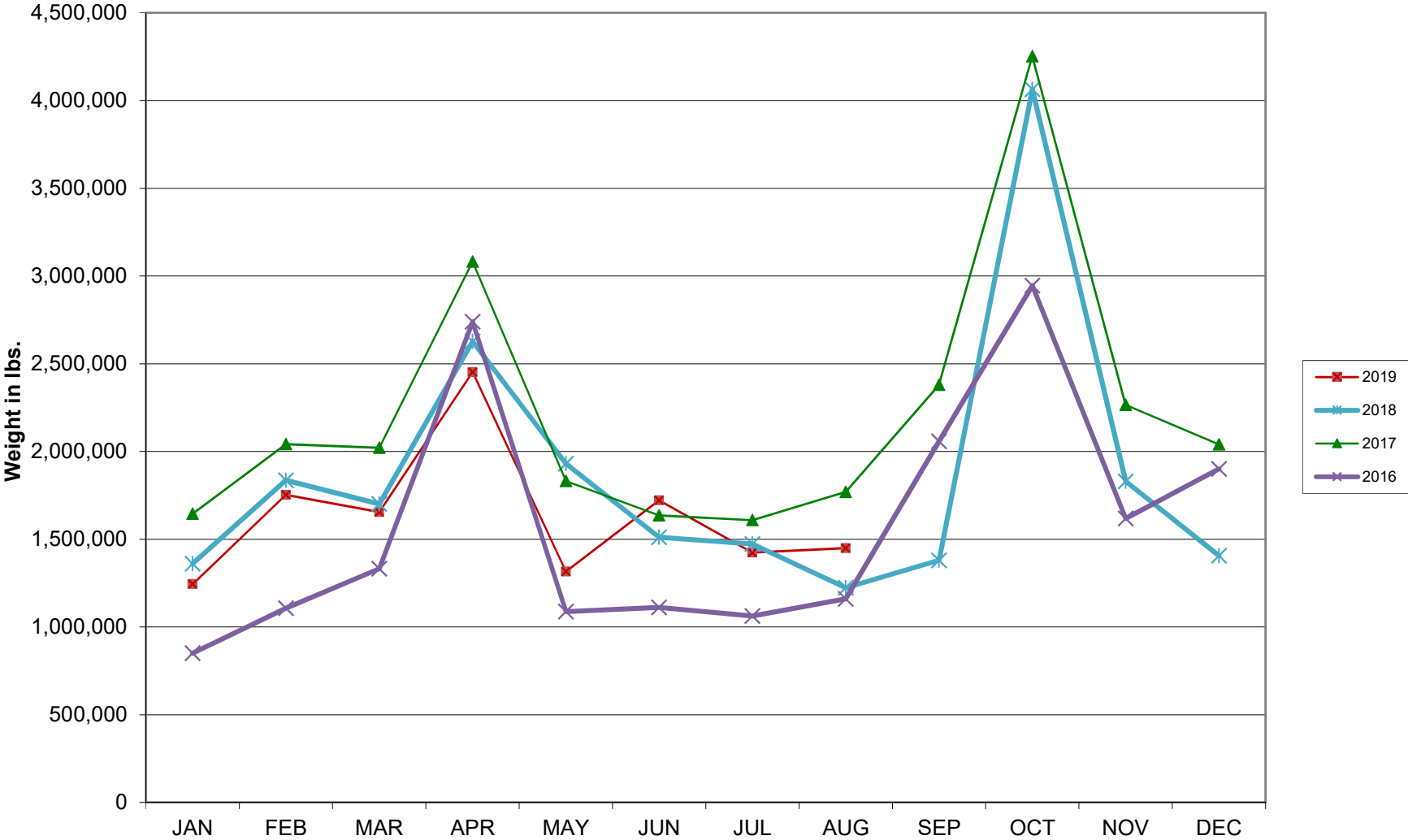
Average Daily Passengers



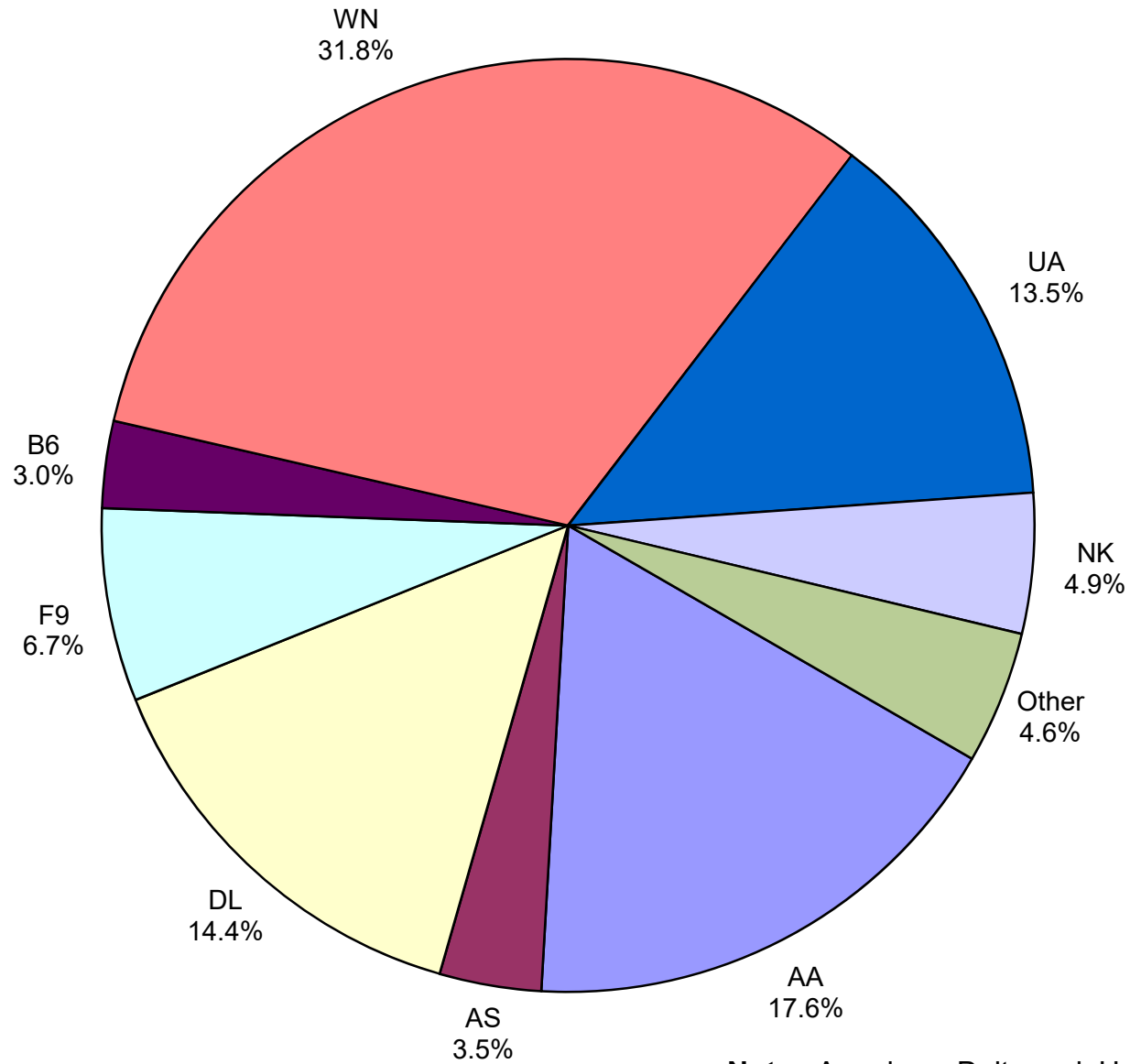
Monthly % Change in Average Daily Passengers



HISTORY OF INTERNATIONAL AIR CARGO



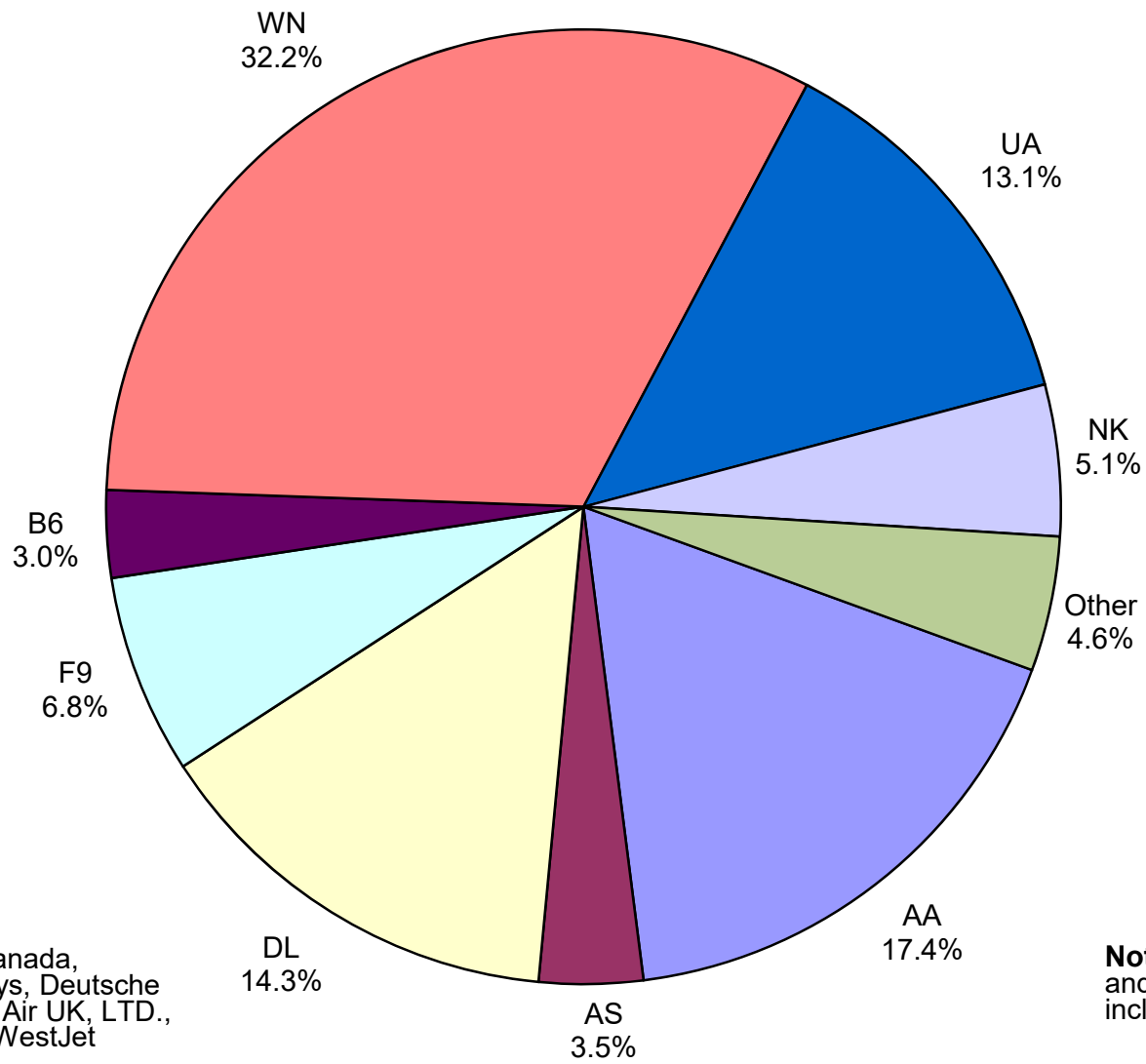
Total Passengers August 2019



Other: Aeromexico, Air Canada LLC, Allegiant Air, British Airways, Deutsche Lufthansa AG, Norwegian Air UK, LTD, Sun Country and WestJet Airlines

Note: American, Delta and United Airlines percentages include Affiliates.

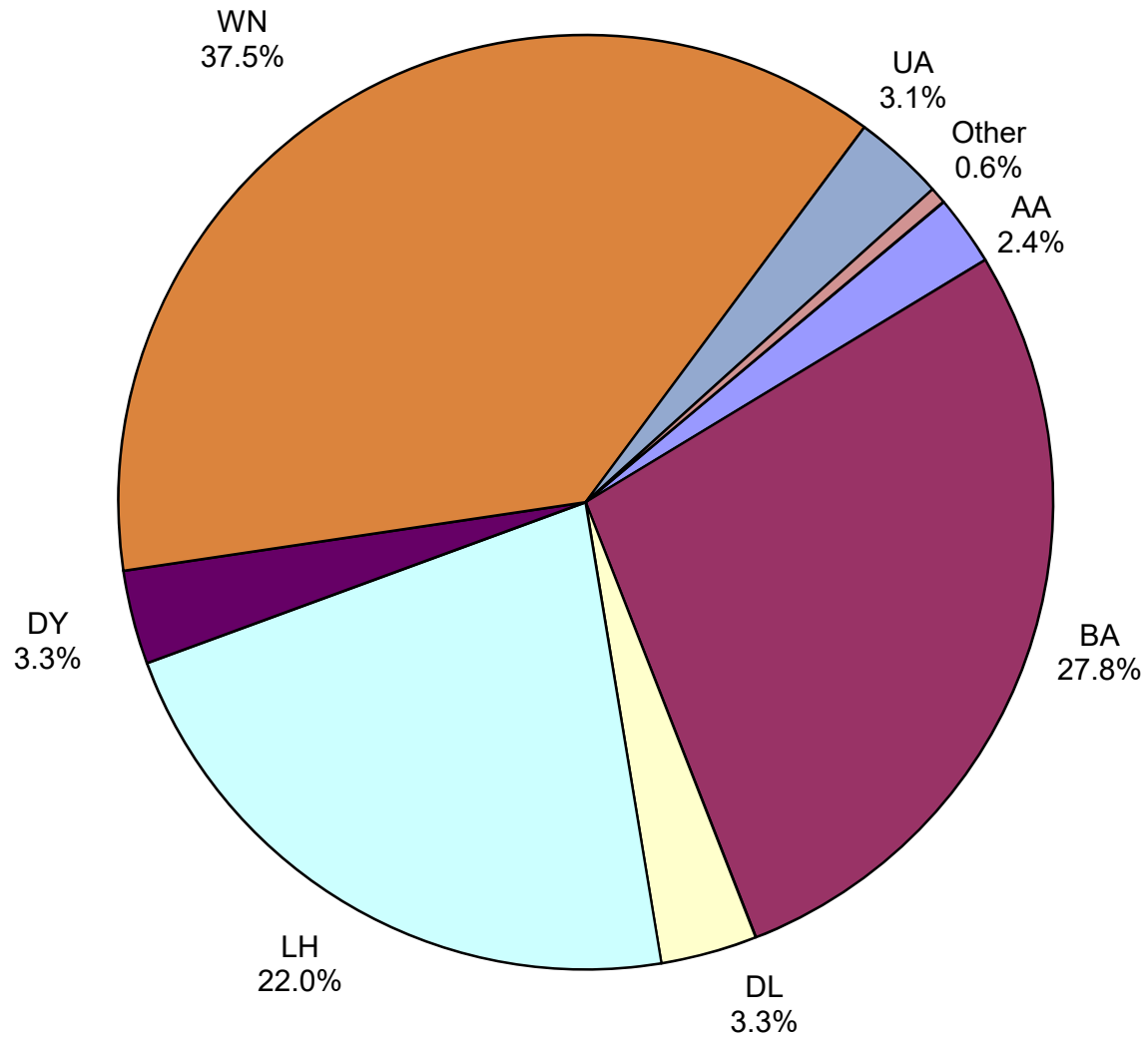
**All Passenger Carriers
Enplaned Revenue Passengers
August 2019**



Other: Aeromexico, Air Canada, Allegiant Air, British Airways, Deutsche Lufthansa AG, Norwegian Air UK, LTD., Sun Country Airlines and WestJet Airlines

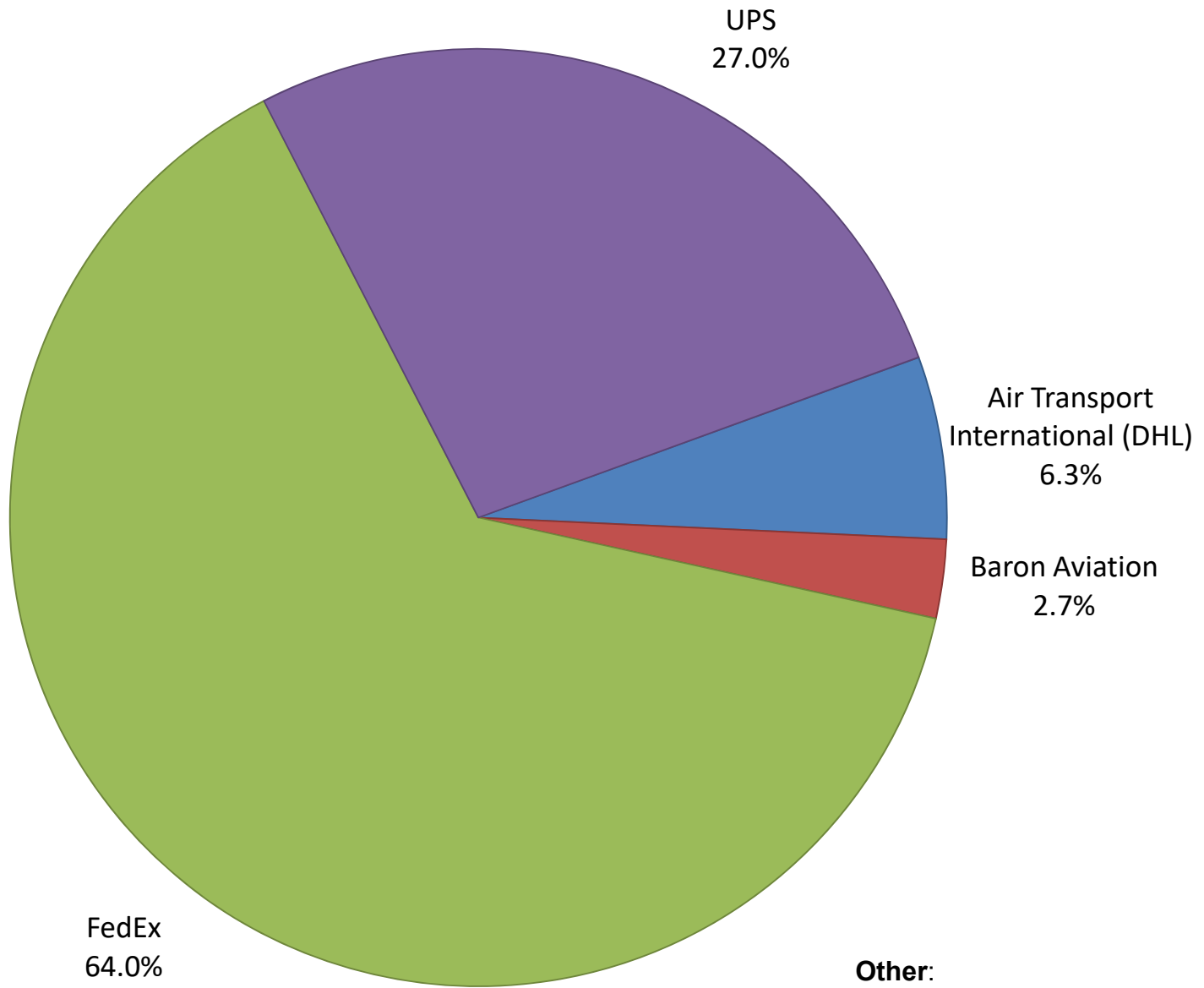
Note: American/US Airways, Delta and United Airlines percentages include Affiliates.

AUS Belly Freight Market Shares August 2019

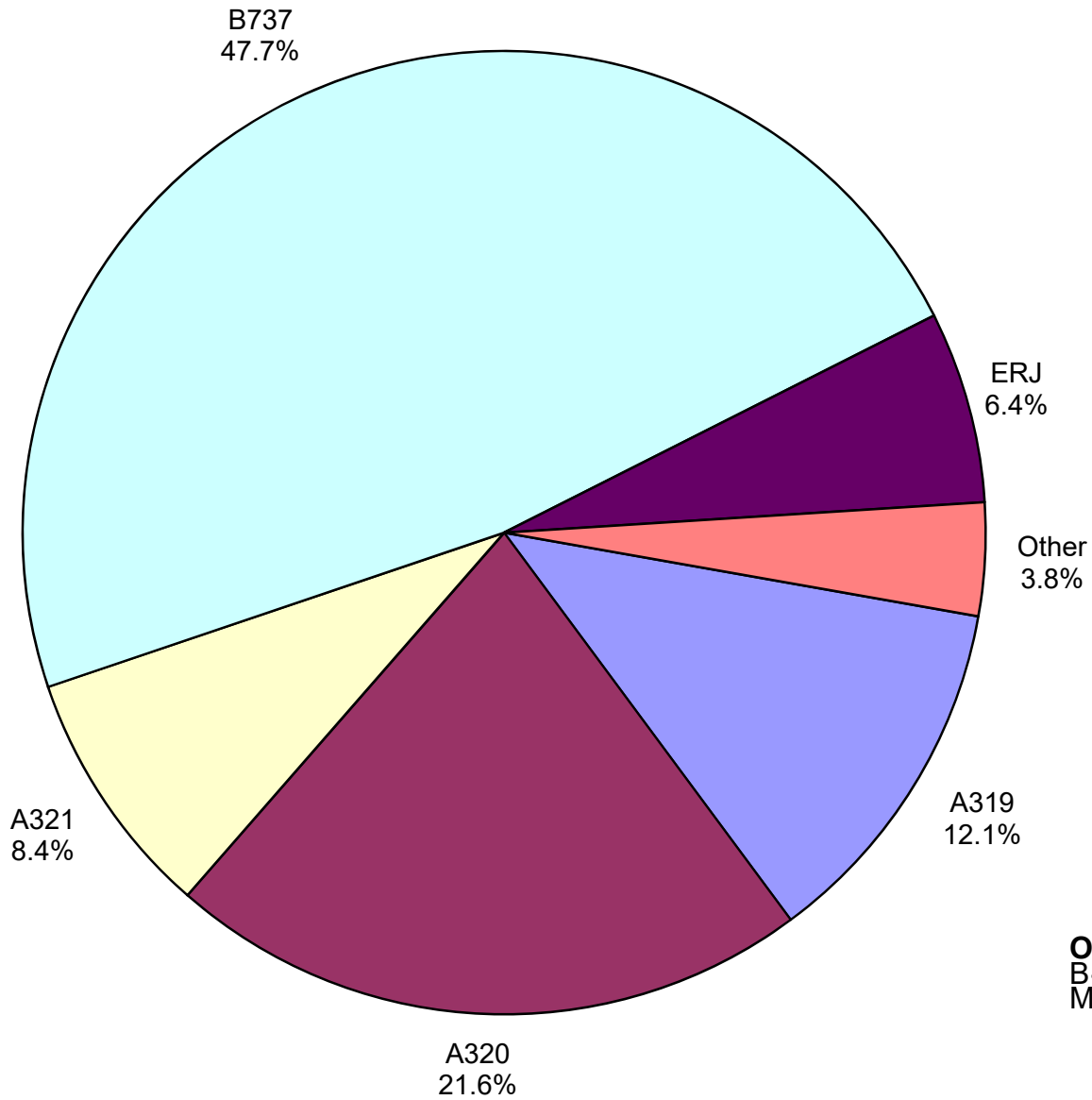


Other = Alaska Airlines

Air Cargo Market Share August 2019

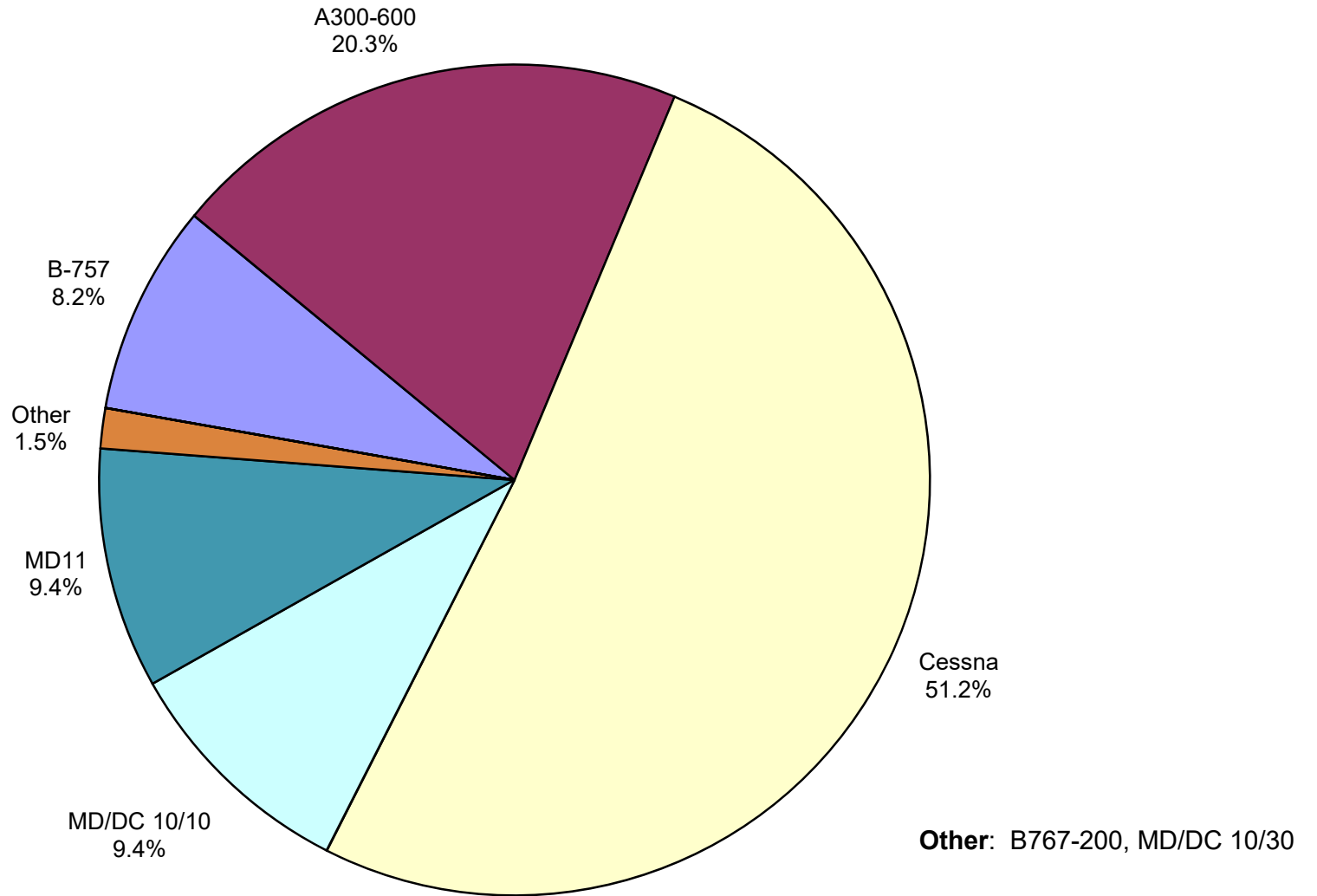


**AUS Scheduled Passenger Aircraft Fleet Mix
August 2019**



Other: A330-300, B-747-400, B-717, B787-900, CRJ, EMB, MD-83 and MD-90

**AUS Scheduled Cargo Aircraft Fleet Mix
August 2019**



Austin-Bergstrom International Airport

PAX Detail Report - August, 2019

Company	08/2019	08/2018	Period		YTD 2019	YTD 2018	YTD		2019 Share	2018 Share	Share Diff
			Difference	Change			Difference	Change			
ABC Aerolineas S.A. de C.V.	0	0	0	0.0	0	41	-41	-100.0	0.0	0.0	0.0
Aerovias de Mexico S.A. de C.V.	4,976	4,316	660	15.3	30,109	30,019	90	0.3	0.3	0.3	0.0
Air Canada	6,756	4,097	2,659	64.9	47,667	31,333	16,334	52.1	0.4	0.3	0.1
Air New Zealand	0	0	0	0.0	302	0	302	0.0	0.0	0.0	0.0
Alaska Airlines	53,716	48,101	5,615	11.7	407,958	365,602	42,356	11.6	3.6	3.5	0.1
Allegiant Air	13,378	20,542	-7,164	-34.9	145,353	217,044	-71,691	-33.0	1.3	2.1	-0.8
American Airlines	267,554	246,070	21,484	8.7	2,031,964	1,850,449	181,515	9.8	17.8	17.6	0.2
British Airways	17,811	15,478	2,333	15.1	127,789	113,063	14,726	13.0	1.1	1.1	0.0
Concesionaria Vuela Compañía de Aviación, S.A.P.I. de C.V.	0	1,513	-1,513	-100.0	434	10,869	-10,435	-96.0	0.0	0.1	-0.1
Condor Airlines	0	5,778	-5,778	-100.0	0	15,706	-15,706	-100.0	0.0	0.1	-0.1
Delta Air Lines	219,955	195,507	24,448	12.5	1,562,617	1,408,450	154,167	10.9	13.7	13.4	0.3
Deutsche Lufthansa AG	8,066	0	8,066	0.0	34,266	0	34,266	0.0	0.3	0.0	0.3
Frontier Airlines	101,922	129,544	-27,622	-21.3	564,007	744,890	-180,883	-24.3	4.9	7.1	-2.2
JetBlue Airways	45,759	51,279	-5,520	-10.8	377,092	401,006	-23,914	-6.0	3.3	3.8	-0.5
Miami Air International	0	0	0	0.0	869	309	560	181.2	0.0	0.0	0.0
Norwegian Air UK LTD	8,666	7,286	1,380	18.9	48,150	39,792	8,358	21.0	0.4	0.4	0.0
Scandinavian Airlines	0	0	0	0.0	423	697	-274	-39.3	0.0	0.0	0.0
Southwest Airlines	483,943	471,333	12,610	2.7	3,897,630	3,688,979	208,651	5.7	34.1	35.1	-1.0
Spirit Airlines	73,908	0	73,908	0.0	471,974	0	471,974	0.0	4.1	0.0	4.1
Sun Country Airlines	8,017	3,272	4,745	145.0	25,689	17,391	8,298	47.7	0.2	0.2	0.1
Swift Air	0	0	0	0.0	1,557	1,142	415	36.3	0.0	0.0	0.0
United Airlines	205,030	207,026	-1,996	-1.0	1,645,182	1,547,493	97,689	6.3	14.4	14.7	-0.3
Vacation Express	0	406	-406	-100.0	1,750	2,758	-1,008	-36.5	0.0	0.0	0.0
VIA Airlines	0	2,435	-2,435	-100.0	3,218	13,513	-10,295	-76.2	0.0	0.1	-0.1
Virgin America	0	0	0	0.0	0	11,117	-11,117	-100.0	0.0	0.1	-0.1
WestJet	2,289	0	2,289	0.0	8,493	0	8,493	0.0	0.1	0.0	0.1
Report Totals	1,521,746	1,413,983	107,763	7.6%	11,434,493	10,511,663	922,830	8.8%			

Statistics Included in Report:

Domestic Passengers:	Enplaned Revenue, Deplaned Revenue, Enplaned Non-Revenue, Deplaned Non-Revenue
International Passengers:	Enplaned Revenue, Deplaned Revenue, Enplaned Non-Revenue, Deplaned Non-Revenue
International Pre-Cleared Passengers:	Enplaned Revenue, Deplaned Revenue, Enplaned Non-Revenue, Deplaned Non-Revenue
South Terminal Domestic Passengers:	Enplaned Revenue, Deplaned Revenue, Enplaned Non-Revenue, Deplaned Non-Revenue

Austin-Bergstrom International Airport

Summary Landing Report

Landing Type: Total

Month	2019		2018		2017		% Change 2019 - 2018		% Change 2018 - 2017	
	Count	Weight	Count	Weight	Count	Weight	Count	Weight	Count	Weight
January	5,348	733,746,679	5,086	688,923,110	4,768	612,688,871	5.15%	6.51%	6.67%	12.44%
February	5,040	692,708,930	4,706	637,500,756	4,357	552,711,639	7.10%	8.66%	8.01%	15.34%
March	5,964	825,483,911	5,643	760,648,260	5,307	685,661,659	5.69%	8.52%	6.33%	10.94%
April	5,899	815,621,798	5,797	793,367,736	5,179	689,402,051	1.76%	2.81%	11.93%	15.08%
May	6,294	881,747,150	6,117	831,431,763	5,529	736,484,083	2.89%	6.05%	10.63%	12.89%
June	6,322	890,410,020	6,211	852,438,818	5,603	752,628,599	1.79%	4.45%	10.85%	13.26%
July	6,551	915,103,306	6,346	869,502,671	5,698	763,088,836	3.23%	5.24%	11.37%	13.95%
August	6,447	906,499,773	6,245	861,046,997	5,490	741,110,019	3.23%	5.28%	13.75%	16.18%
September			5,737	790,731,351	5,046	679,381,339			13.69%	16.39%
October			6,078	846,310,860	5,448	743,973,610			11.56%	13.76%
November			5,684	780,994,101	5,289	718,179,948			7.47%	8.75%
December			5,600	761,317,385	5,442	737,424,963			2.90%	3.24%
Totals for Selected Period	47,865	6,661,321,567	46,151	6,294,860,111	41,931	5,533,775,757	3.71%	5.82%	10.06%	13.75%
Yearly Totals	47,865	6,661,321,567	69,250	9,474,213,808	63,156	8,412,735,617			9.65%	12.62%