

**Austin-Bergstrom International Airport
Aviation Activity Report
Calendar Year 2019 vs 2018**

Combined Terminals

	5/2019	5/2018	Percent Change	1/2019 - 5/2019	1/2018 - 5/2018	Percent Change
ABIA						
Total Passenger Activity						
Domestic Enplaned Revenue	690,289	666,204	3.62	3,011,688	2,835,855	6.20
Domestic Deplaned Revenue	666,380	646,153	3.13	2,995,626	2,833,870	5.71
International Enplaned Revenue	22,949	19,766	16.10	72,318	69,285	4.38
International Deplaned Revenue	20,838	17,074	22.05	73,766	68,629	7.49
Domestic Enplaned Non-Revenue	14,205	15,139	-6.17	68,205	68,143	0.09
Domestic Deplaned Non-Revenue	14,158	14,409	-1.74	66,822	64,808	3.11
International Enplaned Non-Revenue	105	136	-22.79	549	631	-13.00
International Deplaned Non-Revenue	78	120	-35.00	495	468	5.77
Intl Enplaned Pre-Cleared Revenue	4,624	2,157	114.37	13,832	8,981	54.01
Intl Deplaned Pre-Cleared Revenue	3,971	1,964	102.19	13,879	9,190	51.02
Intl Enplaned Pre-Cleared Non-Revenue	48	34	41.18	167	143	16.78
Intl Deplaned Pre-Cleared Non-Revenue	56	33	69.70	183	140	30.71
South Terminal Domestic Enplaned Revenue	53,406	15,445	245.78	169,971	68,024	149.87
South Terminal Domestic Deplaned Revenue	51,602	15,601	230.76	171,543	68,655	149.86
South Terminal Domestic Enplaned Non-Revenue	173	2	8,550.00	581	14	4,050.00
South Terminal Domestic Deplaned Non-Revenue	226	6	3,666.67	709	19	3,631.58
ABIA Passenger Totals	1,543,108	1,414,243	9.11	6,660,334	6,096,855	9.24
<i>ABIA Enplaned Passenger Totals</i>	<i>785,799</i>	<i>718,883</i>	<i>9.31</i>	<i>3,337,311</i>	<i>3,051,076</i>	<i>9.38</i>
<i>ABIA Deplaned Passenger Totals</i>	<i>757,309</i>	<i>695,360</i>	<i>8.91</i>	<i>3,323,023</i>	<i>3,045,779</i>	<i>9.10</i>
<i>ABIA Domestic Passenger Totals</i>	<i>1,490,439</i>	<i>1,372,959</i>	<i>8.56</i>	<i>6,485,145</i>	<i>5,939,388</i>	<i>9.19</i>
<i>ABIA International Passenger Totals</i>	<i>52,669</i>	<i>41,284</i>	<i>27.58</i>	<i>175,189</i>	<i>157,467</i>	<i>11.25</i>
CURRENT PASSENGER RECORD = 1,543,108 RECORD SET = MAY 2019						
Total Aircraft Operations						
Air Carrier	12,360	11,847	4.33	55,955	53,071	5.43
Commuter & Air Taxi	1,416	1,591	-11.00	7,032	7,372	-4.61
Military	799	1,161	-31.18	4,316	4,167	3.58
General Aviation						
Itinerant	3,307	4,381	-24.51	17,749	19,699	-9.90
Local	38	144	-73.61	314	697	-54.95
Total G.A.	3,345	4,525	-26.08	18,063	20,396	-11.44
Total Operations	17,920	19,124	-6.30	85,366	85,006	0.42

**Austin-Bergstrom International Airport
Aviation Activity Report
Calendar Year 2019 vs 2018**

By Terminal

	5/2019	5/2018	Percent Change	1/2019 - 5/2019	1/2018 - 5/2018	Percent Change
<u>Barbara Jordan Terminal (BJT)</u>						
Passenger Activity						
Domestic Enplaned Revenue	690,289	666,204	3.62	3,011,688	2,835,855	6.20
Domestic Deplaned Revenue	666,380	646,153	3.13	2,995,626	2,833,870	5.71
International Enplaned Revenue	22,949	19,766	16.10	72,318	69,285	4.38
International Deplaned Revenue	20,838	17,074	22.05	73,766	68,629	7.49
Domestic Enplaned Non-Revenue	14,205	15,139	-6.17	68,205	68,143	0.09
Domestic Deplaned Non-Revenue	14,158	14,409	-1.74	66,822	64,808	3.11
International Enplaned Non-Revenue	105	136	-22.79	549	631	-13.00
International Deplaned Non-Revenue	78	120	-35.00	495	468	5.77
Intl Enplaned Pre-Cleared Revenue	4,624	2,157	114.37	13,832	8,981	54.01
Intl Deplaned Pre-Cleared Revenue	3,971	1,964	102.19	13,879	9,190	51.02
Intl Enplaned Pre-Cleared Non-Revenue	48	34	41.18	167	143	16.78
Intl Deplaned Pre-Cleared Non-Revenue	56	33	69.70	183	140	30.71
Barbara Jordan Terminal Passenger Totals	1,437,701	1,383,189	3.94	6,317,530	5,960,143	6.00
<i>BJT Enplaned Passenger Totals</i>	<i>732,220</i>	<i>703,436</i>	<i>4.09</i>	<i>3,166,759</i>	<i>2,983,038</i>	<i>6.16</i>
<i>BJT Deplaned Passenger Totals</i>	<i>705,481</i>	<i>679,753</i>	<i>3.78</i>	<i>3,150,771</i>	<i>2,977,105</i>	<i>5.83</i>
<i>BJT Domestic Passenger Totals</i>	<i>1,385,032</i>	<i>1,341,905</i>	<i>3.21</i>	<i>6,142,341</i>	<i>5,802,676</i>	<i>5.85</i>
<i>BJT International Passenger Totals</i>	<i>52,669</i>	<i>41,284</i>	<i>27.58</i>	<i>175,189</i>	<i>157,467</i>	<i>11.25</i>
<u>South Terminal (ST)</u>						
Passenger Activity						
South Terminal Domestic Enplaned Revenue	53,406	15,445	245.78	169,971	68,024	149.87
South Terminal Domestic Deplaned Revenue	51,602	15,601	230.76	171,543	68,655	149.86
South Terminal Domestic Enplaned Non-Revenue	173	2	8550.00	581	14	4050.00
South Terminal Domestic Deplaned Non-Revenue	226	6	3666.67	709	19	3631.58
South Terminal Passenger Totals	105,407	31,054	239.43	342,804	136,712	150.75
<i>ST Enplaned Passenger Totals</i>	<i>53,579</i>	<i>15,447</i>	<i>246.86</i>	<i>170,552</i>	<i>68,038</i>	<i>150.67</i>
<i>ST Deplaned Passenger Totals</i>	<i>51,828</i>	<i>15,607</i>	<i>232.08</i>	<i>172,252</i>	<i>68,674</i>	<i>150.83</i>

**Austin-Bergstrom International Airport
Aviation Activity Report
Calendar Year 2019 vs 2018**

	5/2019	5/2018	Percent Change	1/2019 - 5/2019	1/2018 - 5/2018	Percent Change
<u>Total Cargo Activity</u>						
Mail						
Domestic Enplaned Mail	216,430	231,359	-6.45	1,027,291	953,081	7.79
Domestic Deplaned Mail	711,351	438,669	62.16	3,494,065	2,049,693	70.47
International Enplaned Mail	0	0	0.00	0	0	0.00
International Deplaned Mail	0	0	0.00	110,830	0	0.00
South Terminal-Domestic Enplaned Mail	0	0	0.00	0	0	0.00
South Terminal-Domestic Deplaned Mail	0	0	0.00	0	0	0.00
Mail Totals	927,781	670,028	38.47	4,632,186	3,002,774	54.26
Cargo						
Domestic Enplaned Cargo	4,879,898	5,212,877	-6.39	24,634,205	24,558,052	0.31
Domestic Deplaned Cargo	6,976,487	7,124,891	-2.08	32,705,902	34,252,756	-4.52
International Enplaned Cargo	286,400	960,165	-70.17	1,842,777	3,504,752	-47.42
International Deplaned Cargo	215,368	169,377	27.15	1,665,878	1,688,864	-1.36
South Terminal-Domestic Enplaned Cargo	0	0	0.00	0	0	0.00
South Terminal-Domestic Deplaned Cargo	0	0	0.00	0	0	0.00
Cargo Totals	12,358,153	13,467,310	-8.24	60,848,762	64,004,424	-4.93
Belly Freight						
Domestic Enplaned Belly Freight	465,559	406,697	14.47	1,679,262	1,434,164	17.09
Domestic Deplaned Belly Freight	939,163	647,897	44.96	2,867,717	2,358,246	21.60
International Enplaned Belly Freight	221,607	279,607	-20.74	1,548,438	1,401,884	10.45
International Deplaned Belly Freight	592,187	521,389	13.58	3,251,651	2,858,494	13.75
South Terminal-Domestic Enplaned Belly Frght	0	0	0.00	0	0	0.00
South Terminal-Domestic Deplaned Belly Frght	0	0	0.00	0	0	0.00
Belly Freight Totals	2,218,516	1,855,590	19.56	9,347,068	8,052,788	16.07
Cargo Totals (Mail, Cargo, Belly Freight)	15,504,450	15,992,928	-3.05	74,828,016	75,059,986	-0.31
<i>Enplaned Cargo Totals</i>	<i>6,069,894</i>	<i>7,090,705</i>	<i>-14.40</i>	<i>30,731,973</i>	<i>31,851,933</i>	<i>-3.52</i>
<i>Deplaned Cargo Totals</i>	<i>9,434,556</i>	<i>8,902,223</i>	<i>5.98</i>	<i>44,096,043</i>	<i>43,208,053</i>	<i>2.06</i>
<i>Domestic Cargo Totals</i>	<i>14,188,888</i>	<i>14,062,390</i>	<i>0.90</i>	<i>66,408,442</i>	<i>65,605,992</i>	<i>1.22</i>
<i>International Cargo Totals</i>	<i>1,315,562</i>	<i>1,930,538</i>	<i>-31.86</i>	<i>8,419,574</i>	<i>9,453,994</i>	<i>-10.94</i>

CURRENT CARGO RECORD = 40,215,518

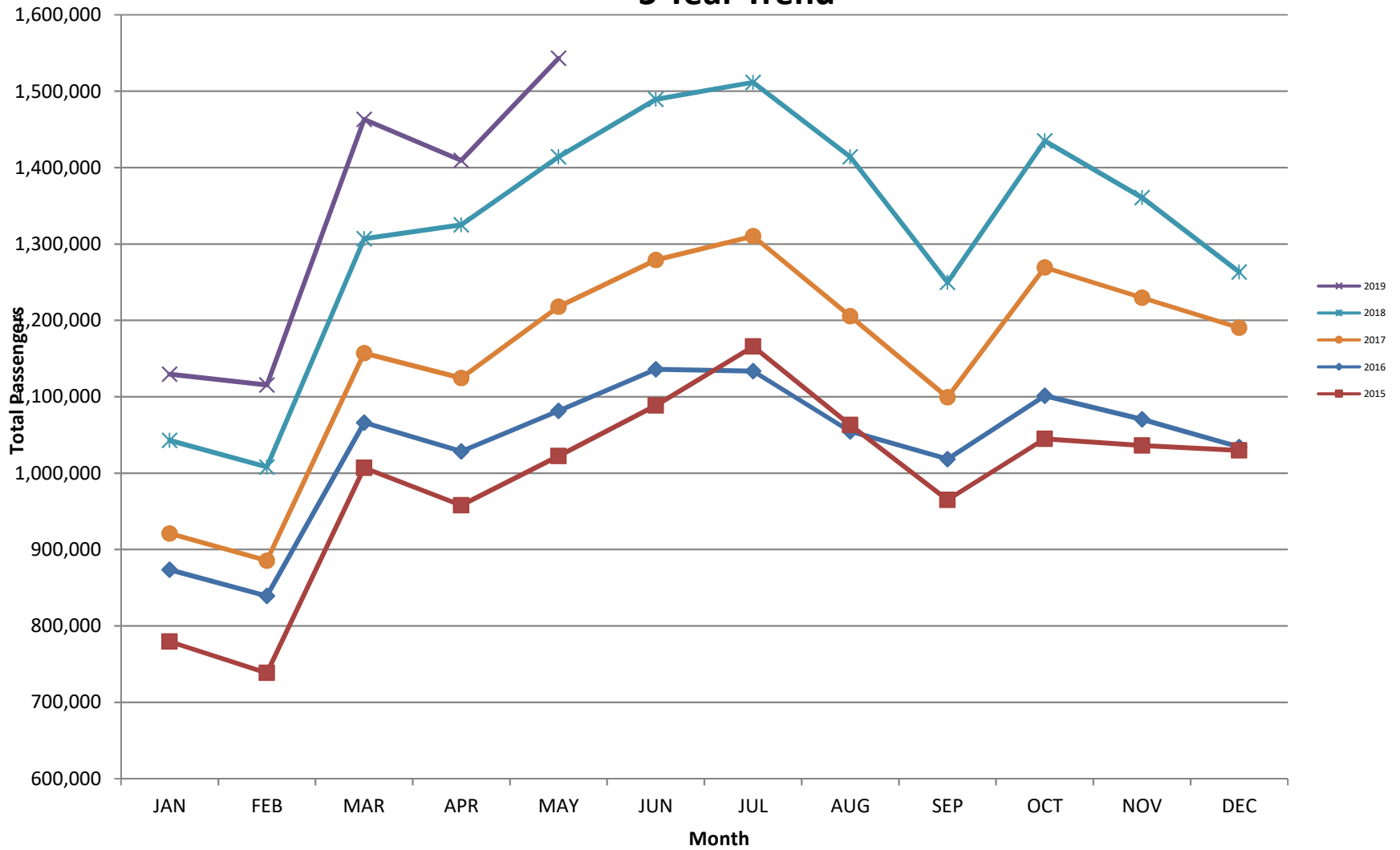
RECORD SET = MARCH 2001

AUS – Airline Codes
May 2019

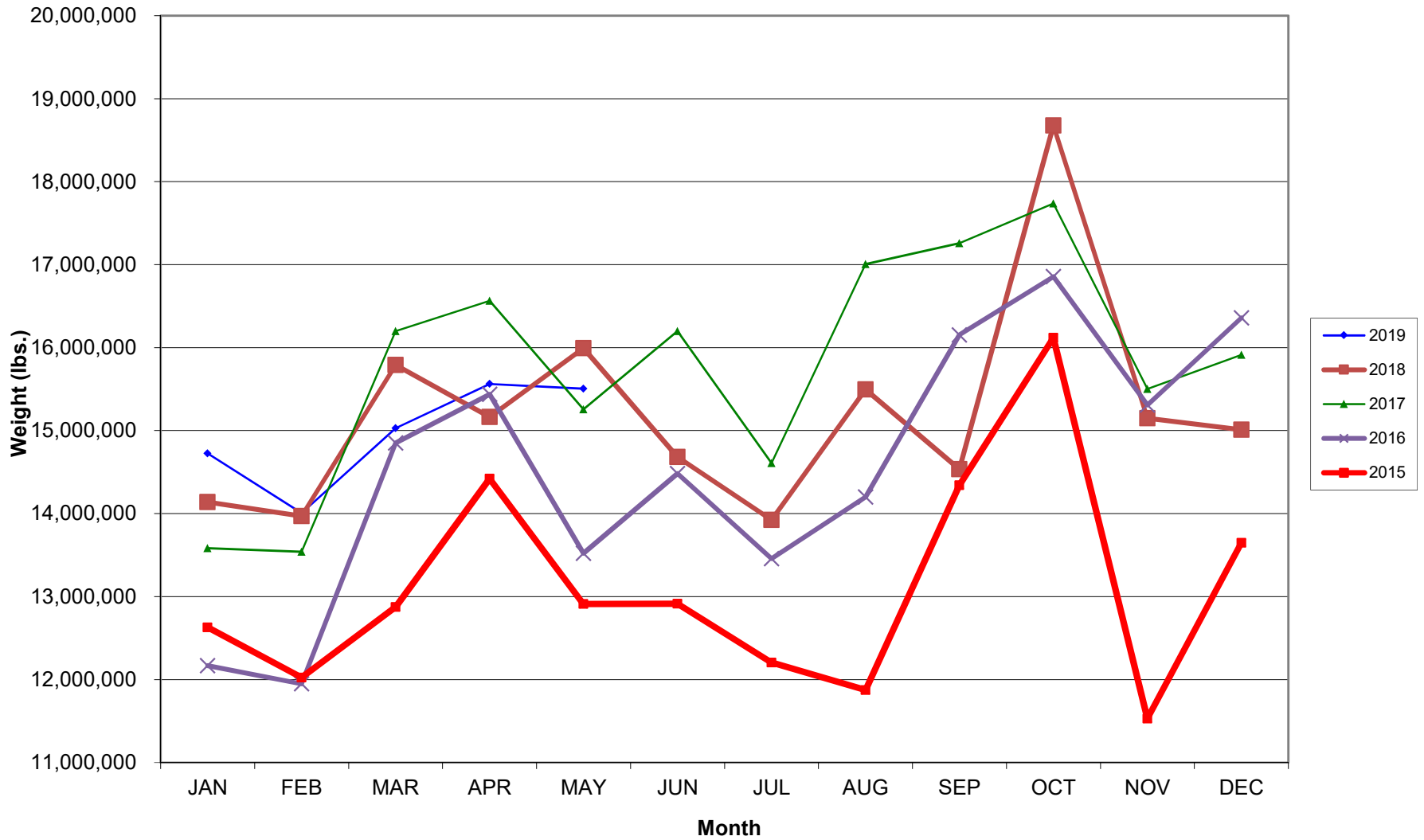
<u>Code</u>	<u>Carrier</u>
AM	Aerovias de Mexico S.A. de C.V. dba AeroMexico Airlines
AC	Air Canada
NZ	Air New Zealand
AS	Alaska Airlines, Inc.
G4	Allegiant Air, LLC
AA	American Airlines, Inc.
BA	British Airways Plc
DL	Delta Airlines
LH	Deutsche Lufthansa AG
F9	Frontier Airlines
B6	JetBlue Airways Corp.
DY	Norwegian Air UK LTD
WN	Southwest Airlines
NK	Spirit Airlines
SY	Sun Country Airlines
WQ	Swift Air
UA	United Airlines, Inc.
VC	VIA Airlines
WS	WestJet Airlines

AUSTIN PASSENGER TRAFFIC

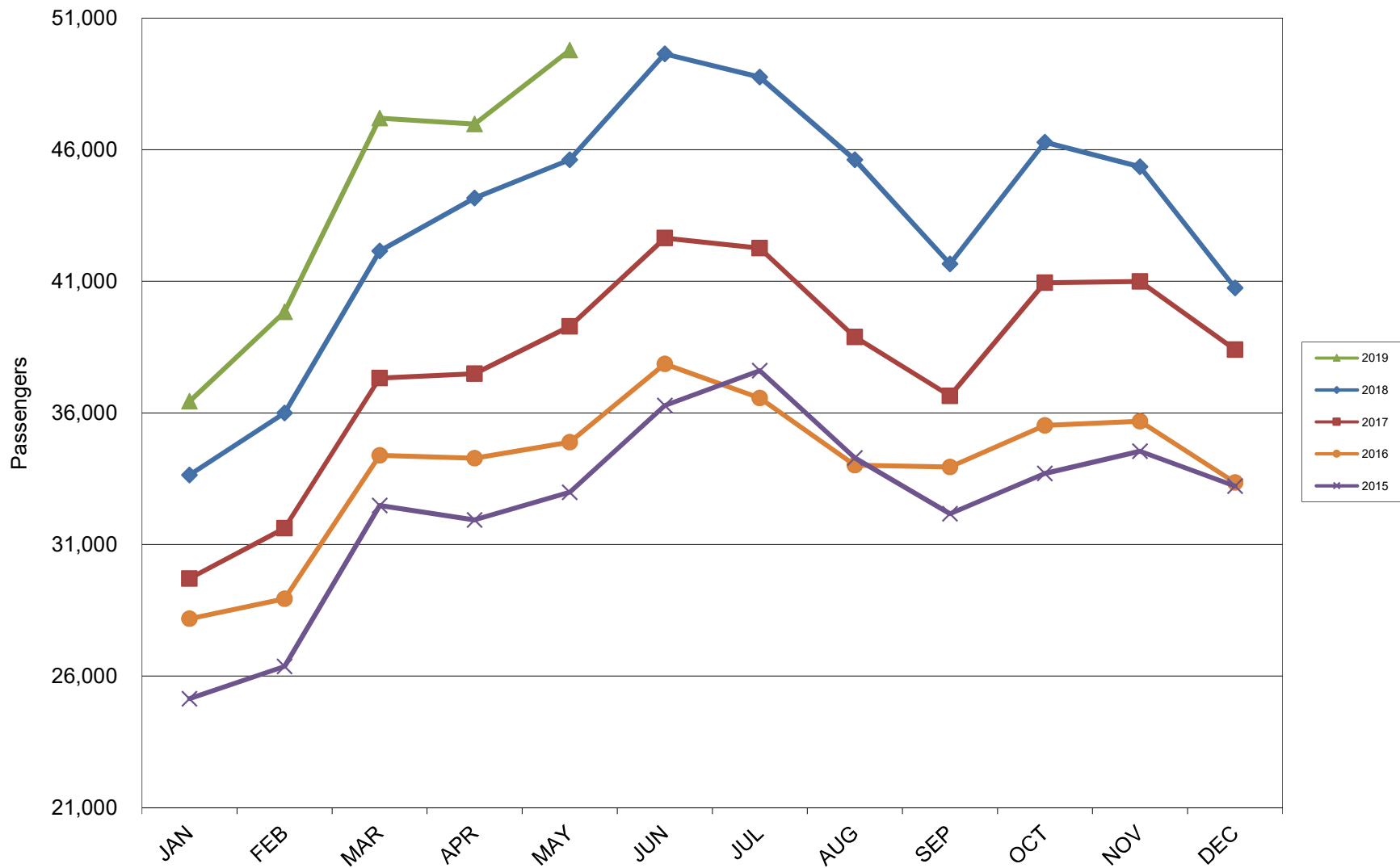
5 Year Trend



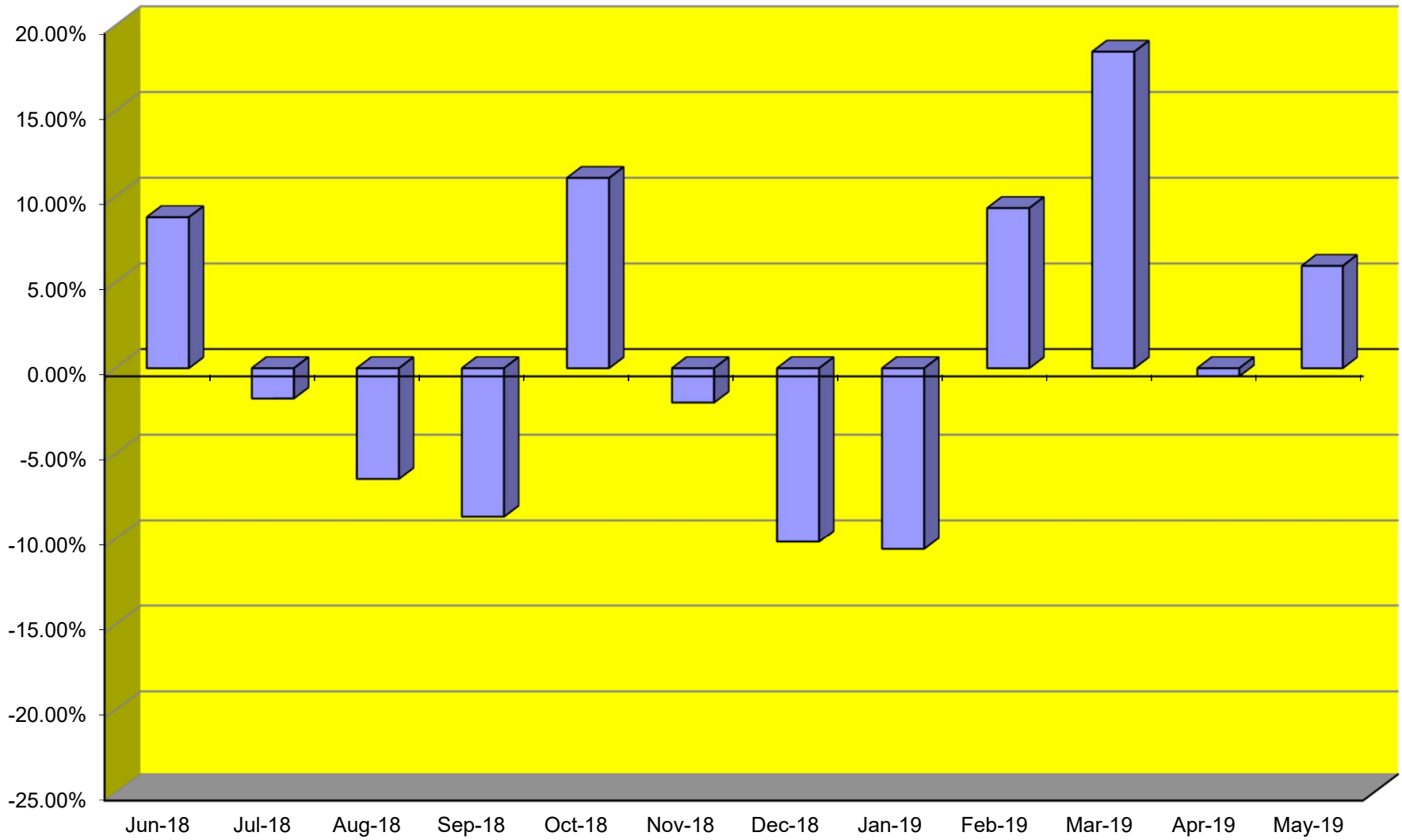
TOTAL CARGO POUNDAGE - AUSTIN, TEXAS



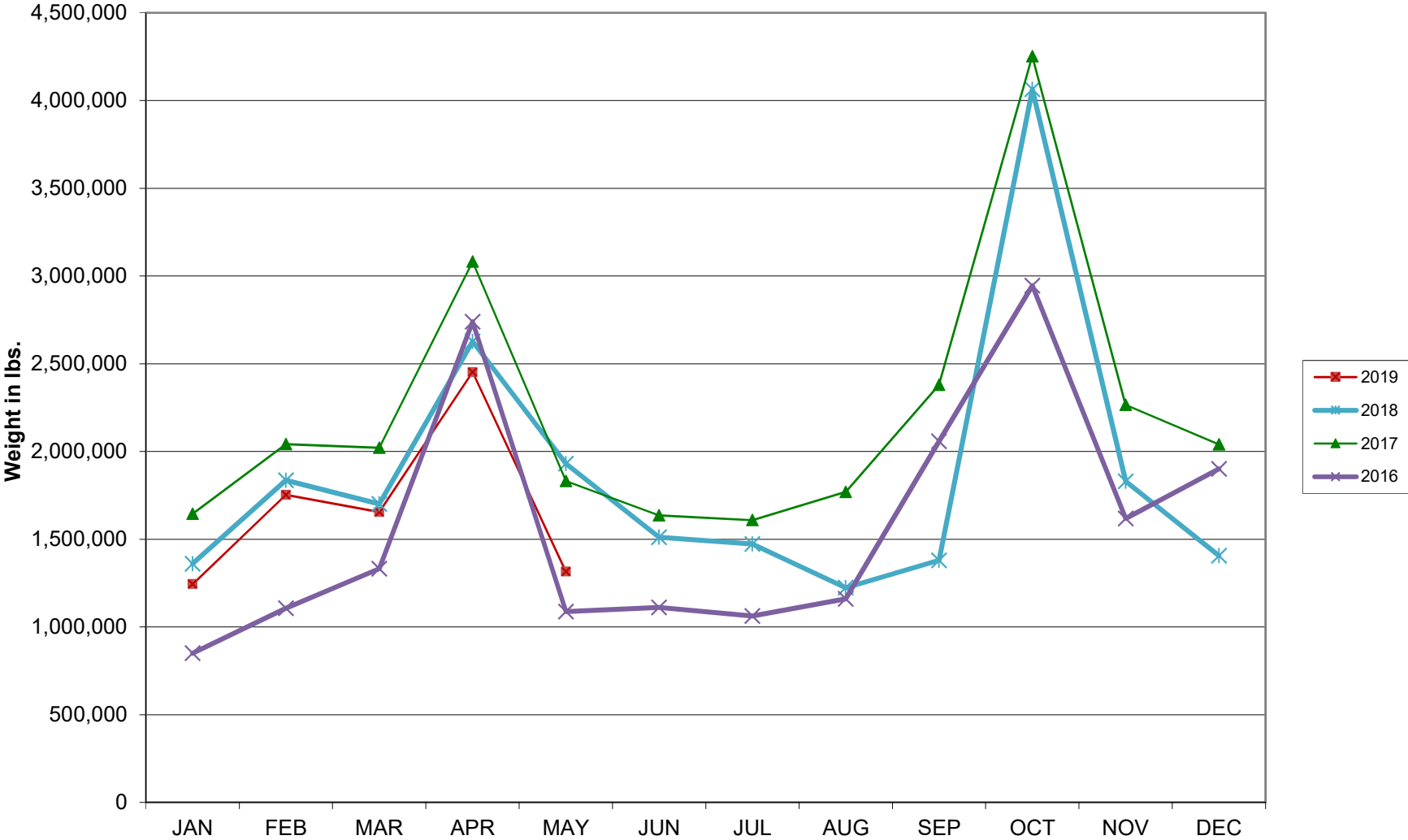
Average Daily Passengers



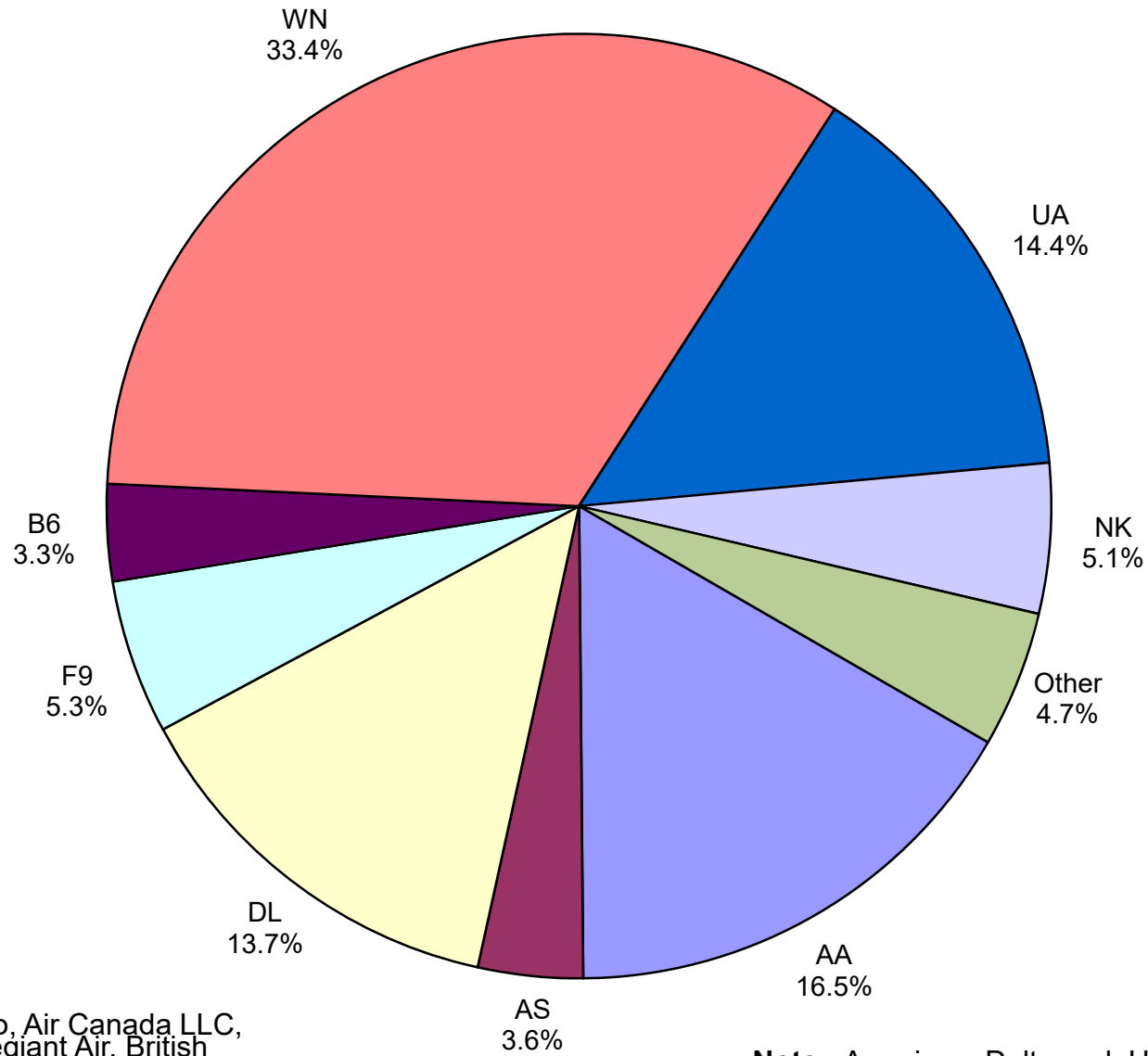
Monthly % Change in Average Daily Passengers



HISTORY OF INTERNATIONAL AIR CARGO



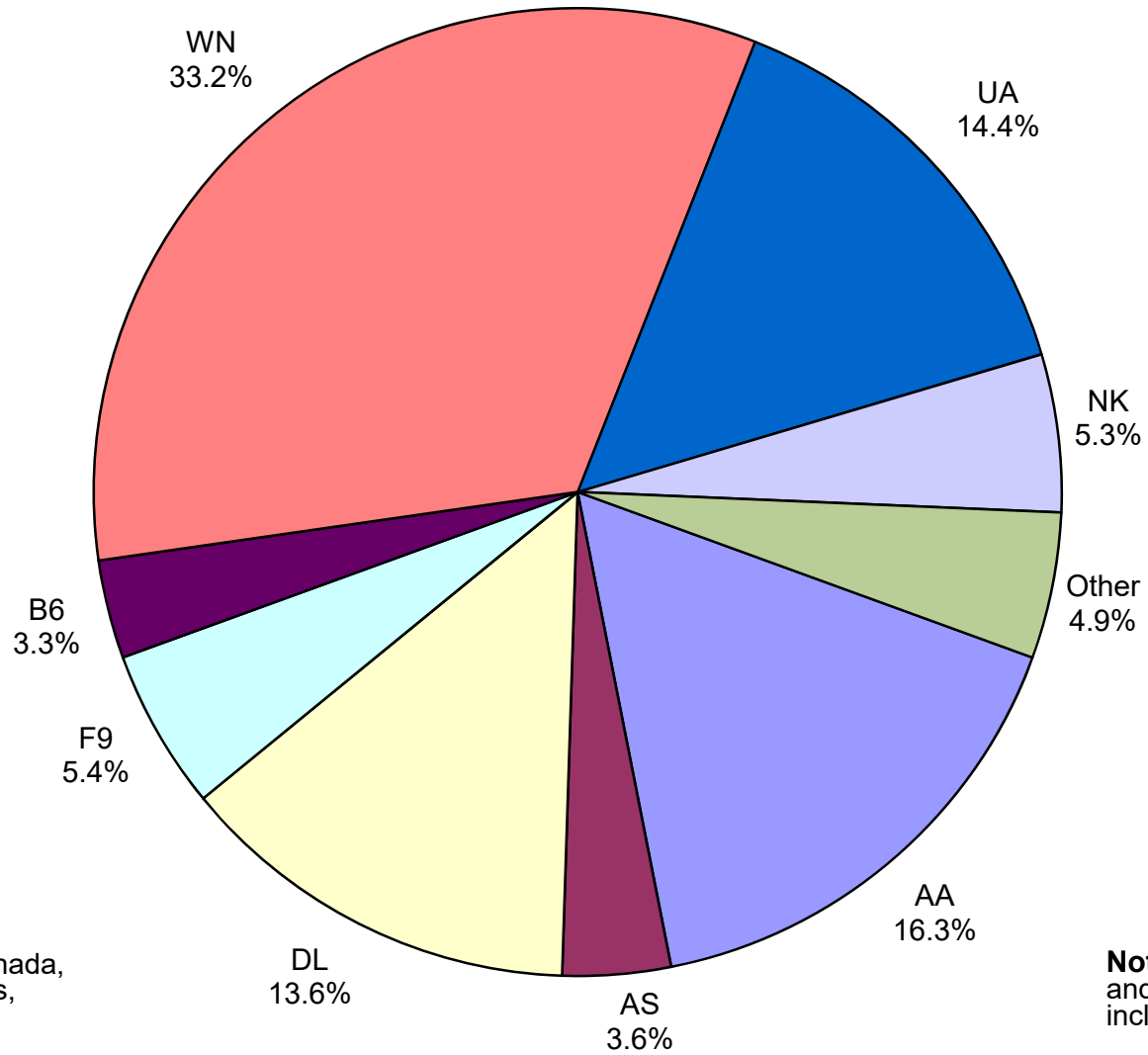
Total Passengers May 2019



Other: Aeromexico, Air Canada LLC, Air New Zealand, Allegiant Air, British Airways, Deutsche Lufthansa AG, Norwegian Air UK, LTD, Sun Country, Swift Air, VIA Airlines and WestJet Airlines

Note: American, Delta and United Airlines percentages include Affiliates.

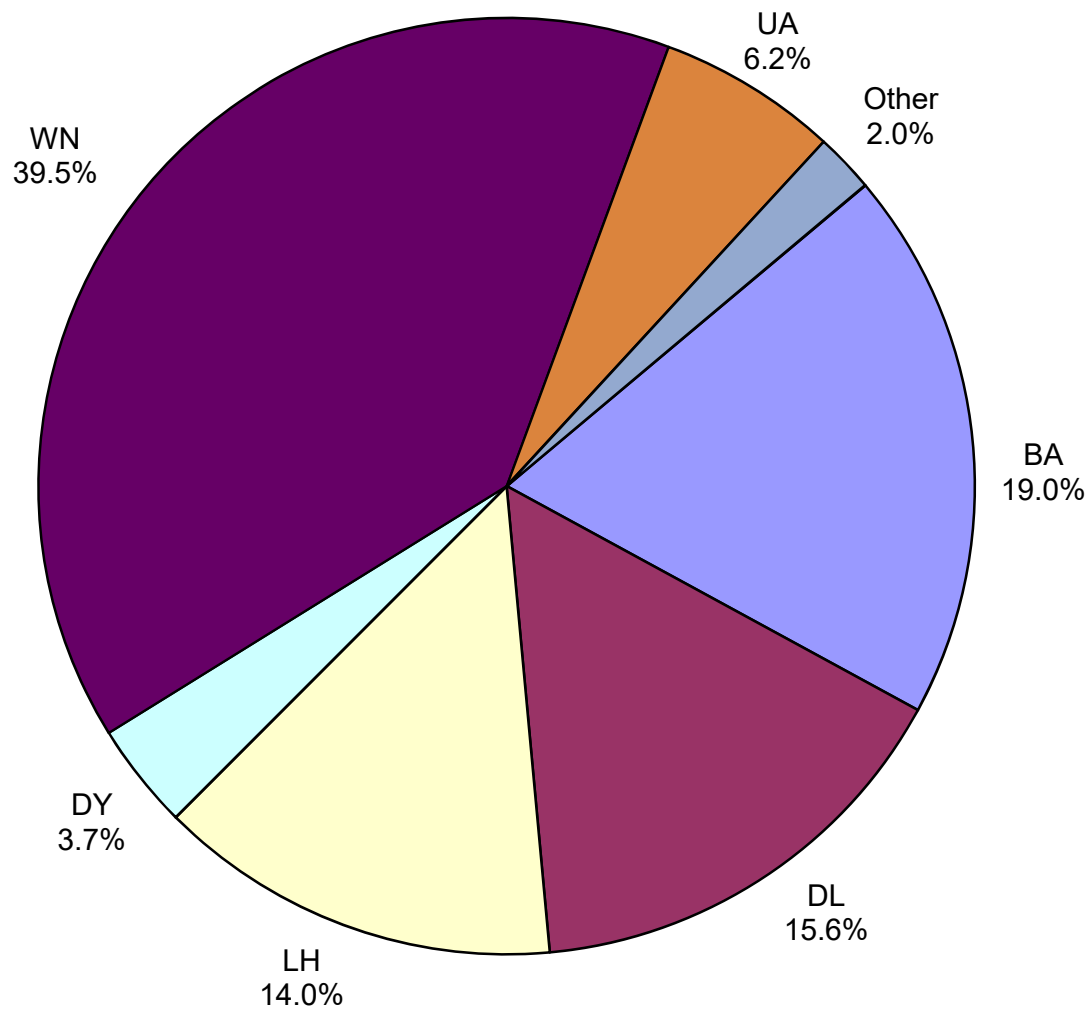
**All Passenger Carriers
Enplaned Revenue Passengers
May 2019**



Other: Aeromexico, Air Canada, Allegiant Air, British Airways, Deutsche Lufthansa AG, Norwegian Air UK, LTD., Sun Country Airlines, Swift Air, VIA Airlines and WestJet Airlines

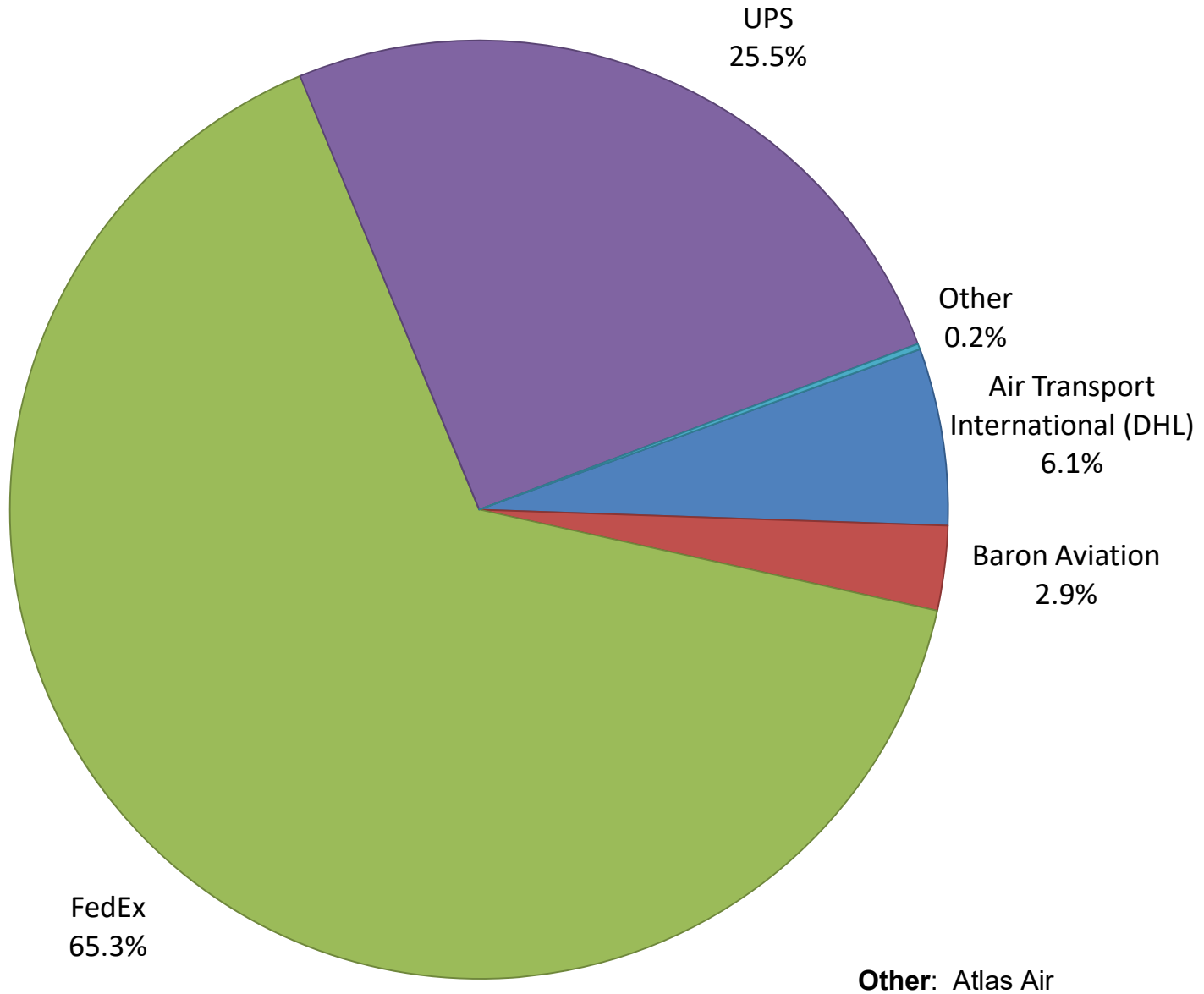
Note: American/US Airways, Delta and United Airlines percentages include Affiliates.

**AUS Belly Freight Market Shares
May 2019**

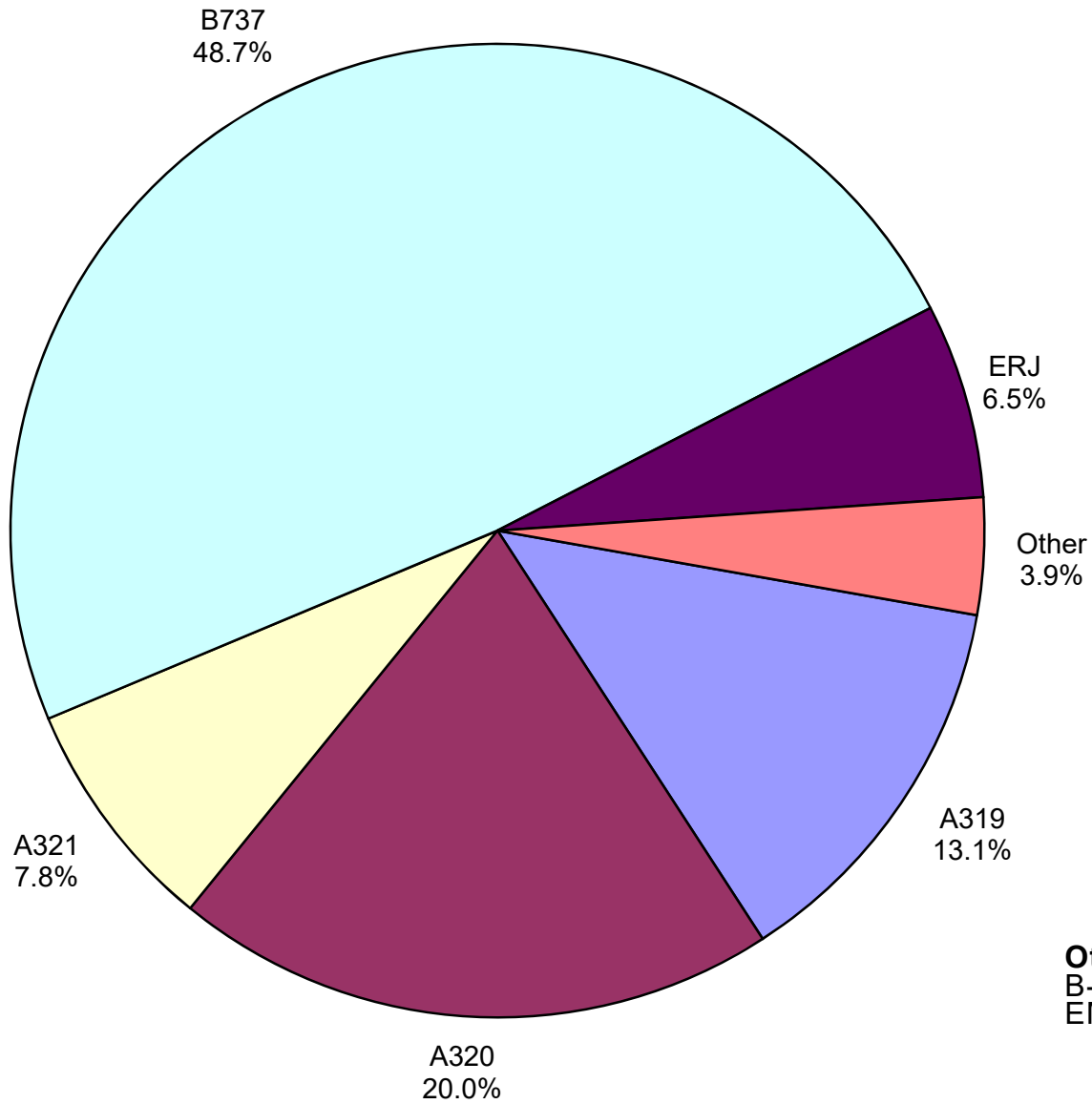


Other = Alaska Airlines and American Airlines

Air Cargo Market Share May 2019

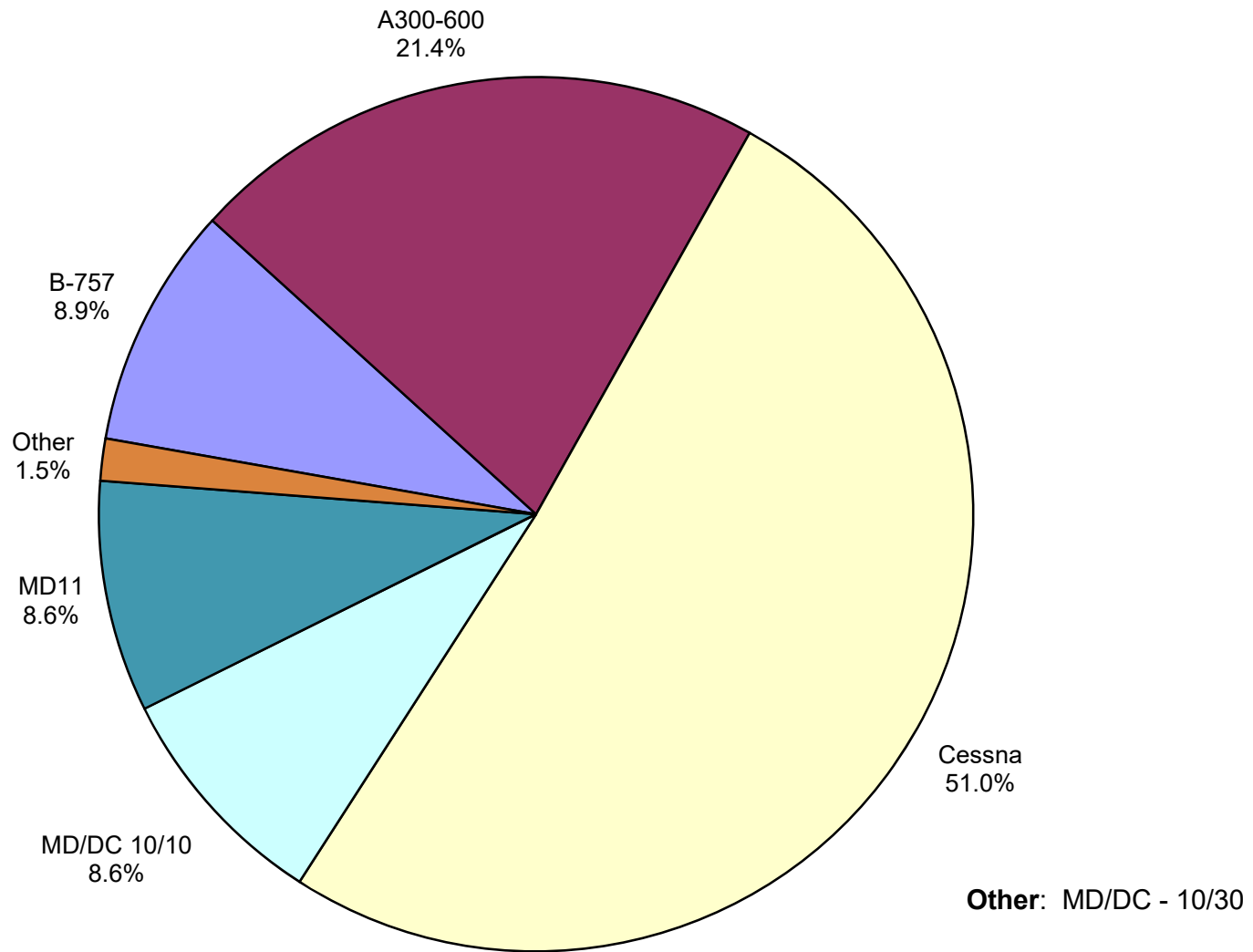


**AUS Scheduled Passenger Aircraft Fleet Mix
May 2019**



Other: A330-300, B-747-400, B-717, B787-900, CRJ and EMB

**AUS Scheduled Cargo Aircraft Fleet Mix
May 2019**



Austin-Bergstrom International Airport

PAX Detail Report - May, 2019

Company	05/2019	05/2018	Period		YTD 2019	YTD 2018	YTD		2019 Share	2018 Share	Share Diff
			Difference	Change			Difference	Change			
Aerovías de Mexico S.A. de C.V.	3,292	3,147	145	4.6	15,054	16,708	-1,654	-9.9	0.2	0.3	0.0
Air Canada	6,840	4,188	2,652	63.3	26,202	18,454	7,748	42.0	0.4	0.3	0.1
Air New Zealand	302	0	302	0.0	302	0	302	0.0	0.0	0.0	0.0
Alaska Airlines	55,366	49,305	6,061	12.3	242,837	216,015	26,822	12.4	3.6	3.5	0.1
Allegiant Air	23,792	28,149	-4,357	-15.5	83,712	128,288	-44,576	-34.7	1.3	2.1	-0.8
American Airlines	254,971	240,753	14,218	5.9	1,236,744	1,103,433	133,311	12.1	18.6	18.1	0.5
British Airways	17,962	17,090	872	5.1	72,747	62,303	10,444	16.8	1.1	1.0	0.1
Concesionaria Vuela Compañía de Aviación, S.A.P.I. de C.V.	0	1,070	-1,070	-100.0	434	5,550	-5,116	-92.2	0.0	0.1	-0.1
Condor Airlines	0	413	-413	-100.0	0	413	-413	-100.0	0.0	0.0	0.0
Delta Air Lines	211,652	190,093	21,559	11.3	895,303	815,107	80,196	9.8	13.4	13.4	0.1
Deutsche Lufthansa AG	7,160	0	7,160	0.0	7,419	0	7,419	0.0	0.1	0.0	0.1
Frontier Airlines	81,461	126,673	-45,212	-35.7	255,874	349,800	-93,926	-26.9	3.8	5.7	-1.9
JetBlue Airways	51,119	48,855	2,264	4.6	230,763	243,627	-12,864	-5.3	3.5	4.0	-0.5
Miami Air International	0	0	0	0.0	776	309	467	151.1	0.0	0.0	0.0
Norwegian Air UK LTD	7,743	8,271	-528	-6.4	23,094	16,638	6,456	38.8	0.3	0.3	0.1
Scandinavian Airlines	0	0	0	0.0	423	697	-274	-39.3	0.0	0.0	0.0
Southwest Airlines	514,694	486,069	28,625	5.9	2,326,329	2,192,174	134,155	6.1	34.9	36.0	-1.0
Spirit Airlines	79,248	0	79,248	0.0	239,048	0	239,048	0.0	3.6	0.0	3.6
Sun Country Airlines	2,604	616	1,988	322.7	6,301	2,263	4,038	178.4	0.1	0.0	0.1
Swift Air	274	286	-12	-4.2	1,267	845	422	49.9	0.0	0.0	0.0
United Airlines	222,615	206,976	15,639	7.6	990,628	906,953	83,675	9.2	14.9	14.9	0.0
VIA Airlines	154	2,289	-2,135	-93.3	3,218	6,161	-2,943	-47.8	0.0	0.1	-0.1
Virgin America	0	0	0	0.0	0	11,117	-11,117	-100.0	0.0	0.2	-0.2
WestJet	1,859	0	1,859	0.0	1,859	0	1,859	0.0	0.0	0.0	0.0
Report Totals	1,543,108	1,414,243	128,865	9.1%	6,660,334	6,096,855	563,479	9.2%			

Statistics Included in Report:

Domestic Passengers:	Enplaned Revenue, Deplaned Revenue, Enplaned Non-Revenue, Deplaned Non-Revenue
International Passengers:	Enplaned Revenue, Deplaned Revenue, Enplaned Non-Revenue, Deplaned Non-Revenue
International Pre-Cleared Passengers:	Enplaned Revenue, Deplaned Revenue, Enplaned Non-Revenue, Deplaned Non-Revenue
South Terminal Domestic Passengers:	Enplaned Revenue, Deplaned Revenue, Enplaned Non-Revenue, Deplaned Non-Revenue

Austin-Bergstrom International Airport

Summary Landing Report

Landing Type: Total

Month	2019		2018		2017		% Change 2019 - 2018		% Change 2018 - 2017	
	Count	Weight	Count	Weight	Count	Weight	Count	Weight	Count	Weight
January	5,348	733,746,679	5,086	688,923,110	4,768	612,688,871	5.15%	6.51%	6.67%	12.44%
February	5,040	692,708,930	4,706	637,500,756	4,357	552,711,639	7.10%	8.66%	8.01%	15.34%
March	5,964	825,483,911	5,643	760,648,260	5,307	685,661,659	5.69%	8.52%	6.33%	10.94%
April	5,899	815,621,798	5,797	793,367,736	5,179	689,402,051	1.76%	2.81%	11.93%	15.08%
May	6,294	881,747,150	6,117	831,431,763	5,529	736,484,083	2.89%	6.05%	10.63%	12.89%
June			6,211	852,438,818	5,603	752,628,599			10.85%	13.26%
July			6,346	869,502,671	5,698	763,088,836			11.37%	13.95%
August			6,245	861,046,997	5,490	741,110,019			13.75%	16.18%
September			5,737	790,731,351	5,046	679,381,339			13.69%	16.39%
October			6,078	846,310,860	5,448	743,973,610			11.56%	13.76%
November			5,684	780,994,101	5,289	718,179,948			7.47%	8.75%
December			5,600	761,317,385	5,442	737,424,963			2.90%	3.24%
Totals for Selected Period	28,545	3,949,308,468	27,349	3,711,871,625	25,140	3,276,948,303	4.37%	6.40%	8.79%	13.27%
Yearly Totals	28,545	3,949,308,468	69,250	9,474,213,808	63,156	8,412,735,617			9.65%	12.62%