

**Austin-Bergstrom International Airport  
Aviation Activity Report  
Calendar Year 2019 vs 2018**

**Combined Terminals**

	6/2019	6/2018	Percent Change	1/2019 - 6/2019	1/2018 - 6/2018	Percent Change
<b>ABIA</b>						
<b>Total Passenger Activity</b>						
Domestic Enplaned Revenue	701,784	699,111	0.38	3,713,472	3,534,966	5.05
Domestic Deplaned Revenue	687,108	667,742	2.90	3,682,734	3,501,612	5.17
International Enplaned Revenue	29,219	26,530	10.14	101,537	95,815	5.97
International Deplaned Revenue	27,465	23,016	19.33	101,231	91,645	10.46
Domestic Enplaned Non-Revenue	15,463	16,825	-8.10	83,668	84,968	-1.53
Domestic Deplaned Non-Revenue	14,513	16,550	-12.31	81,335	81,358	-0.03
International Enplaned Non-Revenue	171	129	32.56	720	760	-5.26
International Deplaned Non-Revenue	140	124	12.90	635	592	7.26
Intl Enplaned Pre-Cleared Revenue	4,992	2,328	114.43	18,824	11,309	66.45
Intl Deplaned Pre-Cleared Revenue	4,346	2,078	109.14	18,225	11,268	61.74
Intl Enplaned Pre-Cleared Non-Revenue	67	49	36.73	234	192	21.88
Intl Deplaned Pre-Cleared Non-Revenue	52	51	1.96	235	191	23.04
South Terminal Domestic Enplaned Revenue	63,311	16,866	275.38	233,282	84,890	174.81
South Terminal Domestic Deplaned Revenue	60,315	17,782	239.19	231,858	86,437	168.24
South Terminal Domestic Enplaned Non-Revenue	196	1	19,500.00	777	15	5,080.00
South Terminal Domestic Deplaned Non-Revenue	255	9	2,733.33	964	28	3,342.86
<b>ABIA Passenger Totals</b>	<b>1,609,397</b>	<b>1,489,191</b>	<b>8.07</b>	<b>8,269,731</b>	<b>7,586,046</b>	<b>9.01</b>
<i>ABIA Enplaned Passenger Totals</i>	<i>815,203</i>	<i>761,839</i>	<i>7.00</i>	<i>4,152,514</i>	<i>3,812,915</i>	<i>8.91</i>
<i>ABIA Deplaned Passenger Totals</i>	<i>794,194</i>	<i>727,352</i>	<i>9.19</i>	<i>4,117,217</i>	<i>3,773,131</i>	<i>9.12</i>
<i>ABIA Domestic Passenger Totals</i>	<i>1,542,945</i>	<i>1,434,886</i>	<i>7.53</i>	<i>8,028,090</i>	<i>7,374,274</i>	<i>8.87</i>
<i>ABIA International Passenger Totals</i>	<i>66,452</i>	<i>54,305</i>	<i>22.37</i>	<i>241,641</i>	<i>211,772</i>	<i>14.10</i>
<b>CURRENT PASSENGER RECORD = 1,609,397 RECORD SET = JUNE 2019</b>						
<b>Total Aircraft Operations</b>						
Air Carrier	12,509	12,050	3.81	68,464	65,121	5.13
Commuter & Air Taxi	1,142	1,350	-15.41	8,174	8,722	-6.28
Military	667	962	-30.67	4,983	5,129	-2.85
General Aviation						
Itinerant	3,091	4,025	-23.20	20,840	23,724	-12.16
Local	74	68	8.82	388	765	-49.28
Total G.A.	<b>3,165</b>	<b>4,093</b>	<b>-22.67</b>	<b>21,228</b>	<b>24,489</b>	<b>-13.32</b>
<b>Total Operations</b>	<b>17,483</b>	<b>18,455</b>	<b>-5.27</b>	<b>102,849</b>	<b>103,461</b>	<b>-0.59</b>

**Austin-Bergstrom International Airport  
Aviation Activity Report  
Calendar Year 2019 vs 2018**

**By Terminal**

	<b>6/2019</b>	<b>6/2018</b>	<b>Percent Change</b>	<b>1/2019 - 6/2019</b>	<b>1/2018 - 6/2018</b>	<b>Percent Change</b>
<b><u>Barbara Jordan Terminal (BJT)</u></b>						
<b>Passenger Activity</b>						
Domestic Enplaned Revenue	701,784	699,111	0.38	3,713,472	3,534,966	5.05
Domestic Deplaned Revenue	687,108	667,742	2.90	3,682,734	3,501,612	5.17
International Enplaned Revenue	29,219	26,530	10.14	101,537	95,815	5.97
International Deplaned Revenue	27,465	23,016	19.33	101,231	91,645	10.46
Domestic Enplaned Non-Revenue	15,463	16,825	-8.10	83,668	84,968	-1.53
Domestic Deplaned Non-Revenue	14,513	16,550	-12.31	81,335	81,358	-0.03
International Enplaned Non-Revenue	171	129	32.56	720	760	-5.26
International Deplaned Non-Revenue	140	124	12.90	635	592	7.26
Intl Enplaned Pre-Cleared Revenue	4,992	2,328	114.43	18,824	11,309	66.45
Intl Deplaned Pre-Cleared Revenue	4,346	2,078	109.14	18,225	11,268	61.74
Intl Enplaned Pre-Cleared Non-Revenue	67	49	36.73	234	192	21.88
Intl Deplaned Pre-Cleared Non-Revenue	52	51	1.96	235	191	23.04
<b>Barbara Jordan Terminal Passenger Totals</b>	<b>1,485,320</b>	<b>1,454,533</b>	<b>2.12</b>	<b>7,802,850</b>	<b>7,414,676</b>	<b>5.24</b>
<i>BJT Enplaned Passenger Totals</i>	<i>751,696</i>	<i>744,972</i>	<i>0.90</i>	<i>3,918,455</i>	<i>3,728,010</i>	<i>5.11</i>
<i>BJT Deplaned Passenger Totals</i>	<i>733,624</i>	<i>709,561</i>	<i>3.39</i>	<i>3,884,395</i>	<i>3,686,666</i>	<i>5.36</i>
<i>BJT Domestic Passenger Totals</i>	<i>1,418,868</i>	<i>1,400,228</i>	<i>1.33</i>	<i>7,561,209</i>	<i>7,202,904</i>	<i>4.97</i>
<i>BJT International Passenger Totals</i>	<i>66,452</i>	<i>54,305</i>	<i>22.37</i>	<i>241,641</i>	<i>211,772</i>	<i>14.10</i>
<b><u>South Terminal (ST)</u></b>						
<b>Passenger Activity</b>						
South Terminal Domestic Enplaned Revenue	63,311	16,866	275.38	233,282	84,890	174.81
South Terminal Domestic Deplaned Revenue	60,315	17,782	239.19	231,858	86,437	168.24
South Terminal Domestic Enplaned Non-Revenue	196	1	19500.00	777	15	5080.00
South Terminal Domestic Deplaned Non-Revenue	255	9	2733.33	964	28	3342.86
<b>South Terminal Passenger Totals</b>	<b>124,077</b>	<b>34,658</b>	<b>258.00</b>	<b>466,881</b>	<b>171,370</b>	<b>172.44</b>
<i>ST Enplaned Passenger Totals</i>	<i>63,507</i>	<i>16,867</i>	<i>276.52</i>	<i>234,059</i>	<i>84,905</i>	<i>175.67</i>
<i>ST Deplaned Passenger Totals</i>	<i>60,570</i>	<i>17,791</i>	<i>240.45</i>	<i>232,822</i>	<i>86,465</i>	<i>169.27</i>

**Austin-Bergstrom International Airport  
Aviation Activity Report  
Calendar Year 2019 vs 2018**

	6/2019	6/2018	Percent Change	1/2019 - 6/2019	1/2018 - 6/2018	Percent Change
<b><u>Total Cargo Activity</u></b>						
<b>Mail</b>						
Domestic Enplaned Mail	179,178	219,943	-18.53	1,206,469	1,173,024	2.85
Domestic Deplaned Mail	577,964	417,448	38.45	4,072,029	2,467,141	65.05
International Enplaned Mail	0	0	0.00	0	0	0.00
International Deplaned Mail	0	0	0.00	110,830	0	0.00
South Terminal-Domestic Enplaned Mail	0	0	0.00	0	0	0.00
South Terminal-Domestic Deplaned Mail	0	0	0.00	0	0	0.00
<b>Mail Totals</b>	<b>757,142</b>	<b>637,391</b>	<b>18.79</b>	<b>5,389,328</b>	<b>3,640,165</b>	<b>48.05</b>
<b>Cargo</b>						
Domestic Enplaned Cargo	4,572,947	5,020,388	-8.91	29,207,152	29,578,440	-1.26
Domestic Deplaned Cargo	6,432,030	6,639,447	-3.12	39,137,932	40,892,203	-4.29
International Enplaned Cargo	457,619	530,292	-13.70	2,300,396	4,035,044	-42.99
International Deplaned Cargo	194,888	102,356	90.40	1,860,766	1,791,220	3.88
South Terminal-Domestic Enplaned Cargo	0	0	0.00	0	0	0.00
South Terminal-Domestic Deplaned Cargo	0	0	0.00	0	0	0.00
<b>Cargo Totals</b>	<b>11,657,484</b>	<b>12,292,483</b>	<b>-5.17</b>	<b>72,506,246</b>	<b>76,296,907</b>	<b>-4.97</b>
<b>Belly Freight</b>						
Domestic Enplaned Belly Freight	312,339	356,817	-12.47	1,991,601	1,790,981	11.20
Domestic Deplaned Belly Freight	449,015	519,087	-13.50	3,316,732	2,877,333	15.27
International Enplaned Belly Freight	430,958	304,656	41.46	1,979,396	1,706,540	15.99
International Deplaned Belly Freight	637,672	573,223	11.24	3,889,323	3,431,717	13.33
South Terminal-Domestic Enplaned Belly Frght	0	0	0.00	0	0	0.00
South Terminal-Domestic Deplaned Belly Frght	0	0	0.00	0	0	0.00
<b>Belly Freight Totals</b>	<b>1,829,984</b>	<b>1,753,783</b>	<b>4.34</b>	<b>11,177,052</b>	<b>9,806,571</b>	<b>13.98</b>
<b>Cargo Totals (Mail, Cargo, Belly Freight)</b>	<b>14,244,610</b>	<b>14,683,657</b>	<b>-2.99</b>	<b>89,072,626</b>	<b>89,743,643</b>	<b>-0.75</b>
<i>Enplaned Cargo Totals</i>	<i>5,953,041</i>	<i>6,432,096</i>	<i>-7.45</i>	<i>36,685,014</i>	<i>38,284,029</i>	<i>-4.18</i>
<i>Deplaned Cargo Totals</i>	<i>8,291,569</i>	<i>8,251,561</i>	<i>0.48</i>	<i>52,387,612</i>	<i>51,459,614</i>	<i>1.80</i>
<i>Domestic Cargo Totals</i>	<i>12,523,473</i>	<i>13,173,130</i>	<i>-4.93</i>	<i>78,931,915</i>	<i>78,779,122</i>	<i>0.19</i>
<i>International Cargo Totals</i>	<i>1,721,137</i>	<i>1,510,527</i>	<i>13.94</i>	<i>10,140,711</i>	<i>10,964,521</i>	<i>-7.51</i>

CURRENT CARGO RECORD = 40,215,518

RECORD SET = MARCH 2001

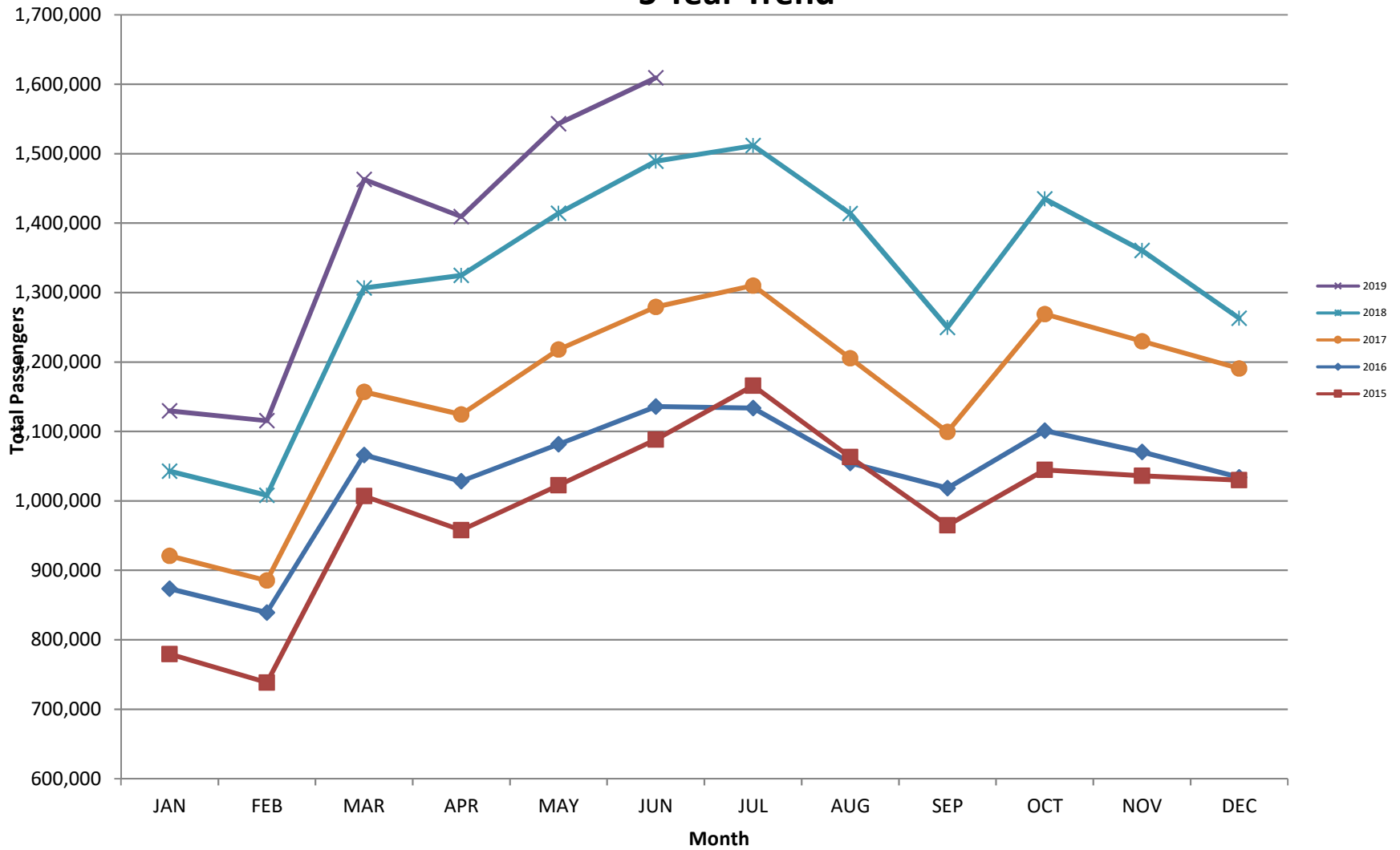
## AUS – Airline Codes

June 2019

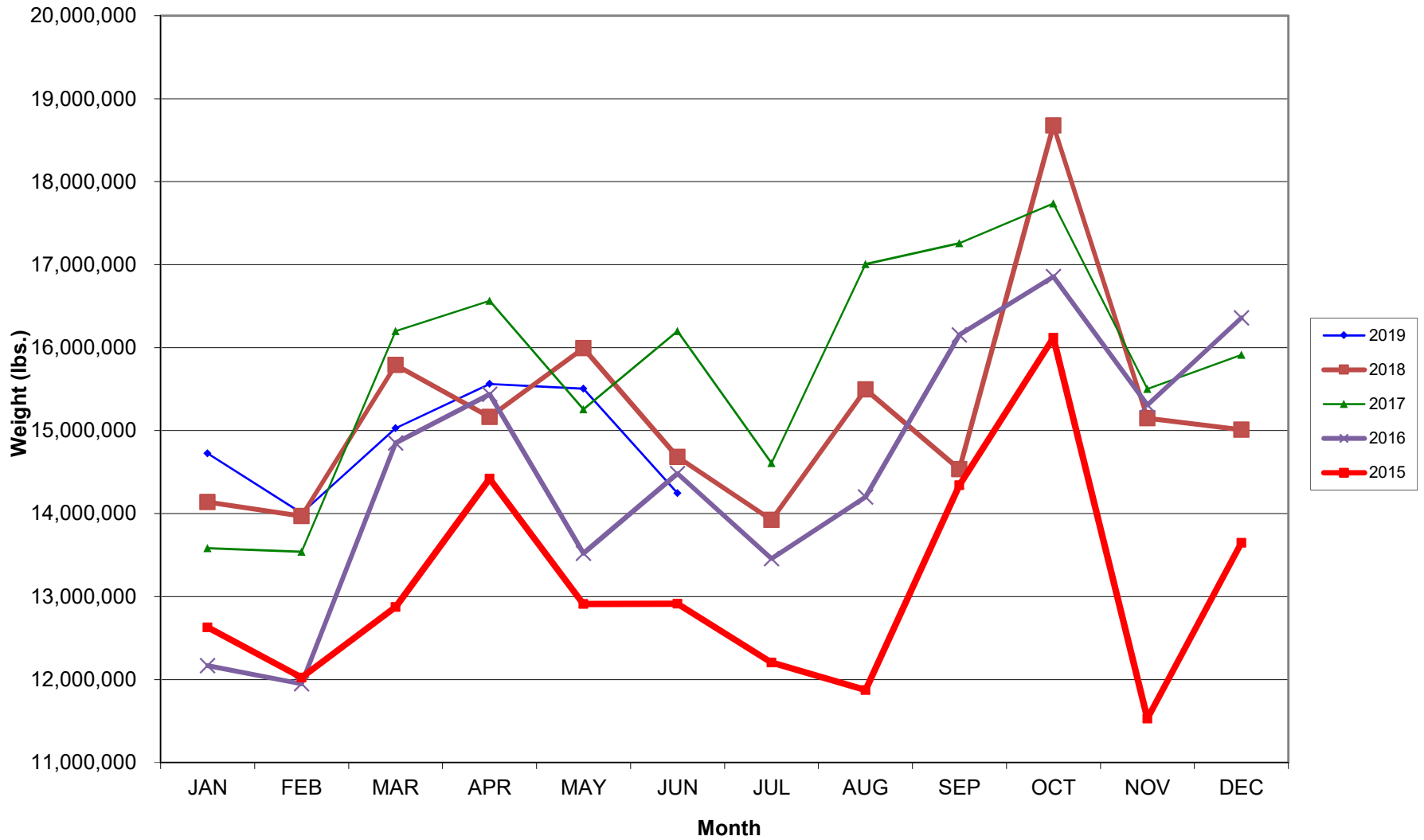
<u>Code</u>	<u>Carrier</u>
AM	Aerovias de Mexico S.A. de C.V. dba AeroMexico Airlines
AC	Air Canada
AS	Alaska Airlines, Inc.
G4	Allegiant Air, LLC
AA	American Airlines, Inc.
BA	British Airways Plc
DL	Delta Airlines
LH	Deutsche Lufthansa AG
F9	Frontier Airlines
B6	JetBlue Airways Corp.
LL	Miami Air International
DY	Norwegian Air UK LTD
WN	Southwest Airlines
NK	Spirit Airlines
SY	Sun Country Airlines
UA	United Airlines, Inc.
WQ	Vacation Express handled by Swift Air
WS	WestJet Airlines

# AUSTIN PASSENGER TRAFFIC

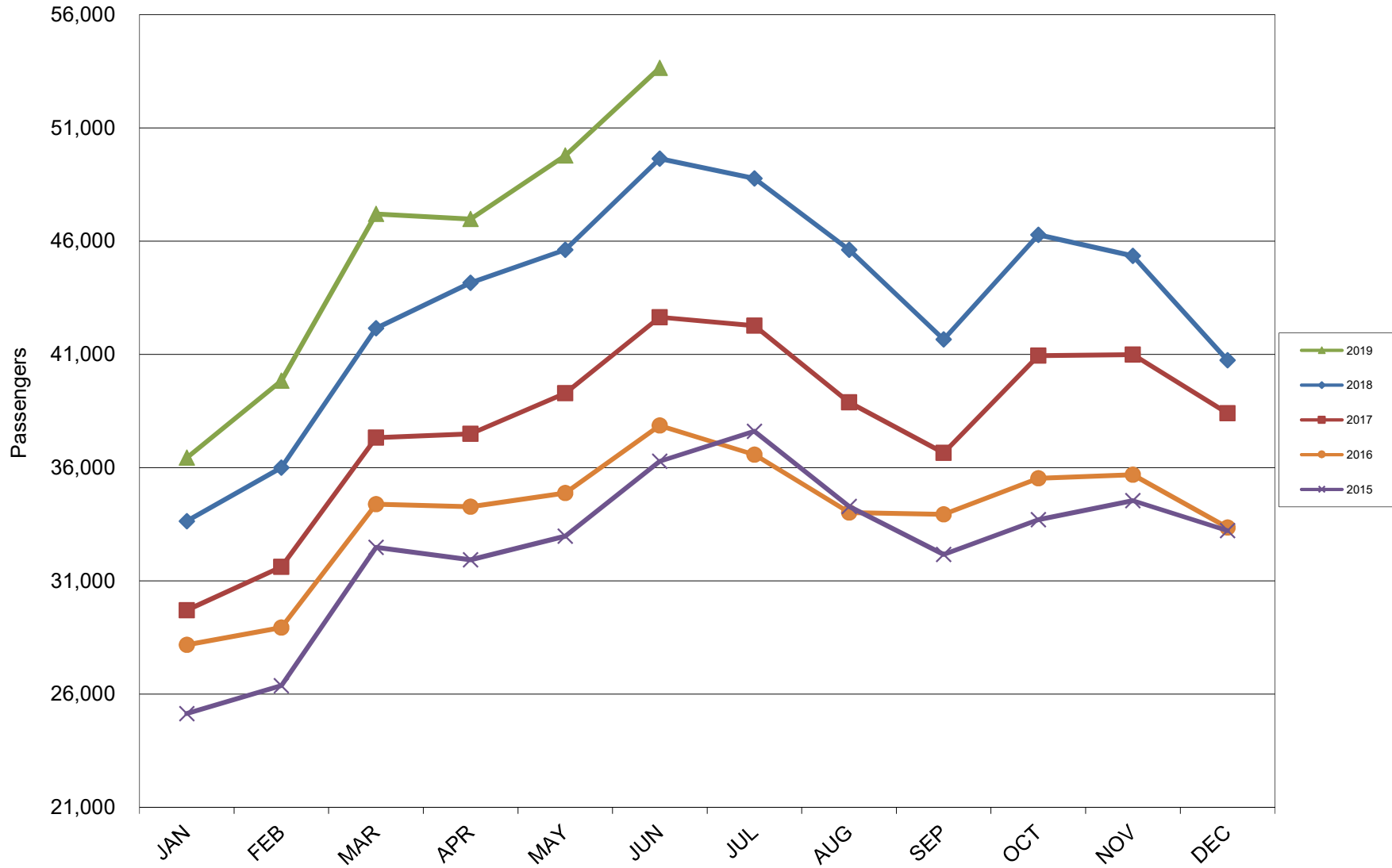
## 5 Year Trend



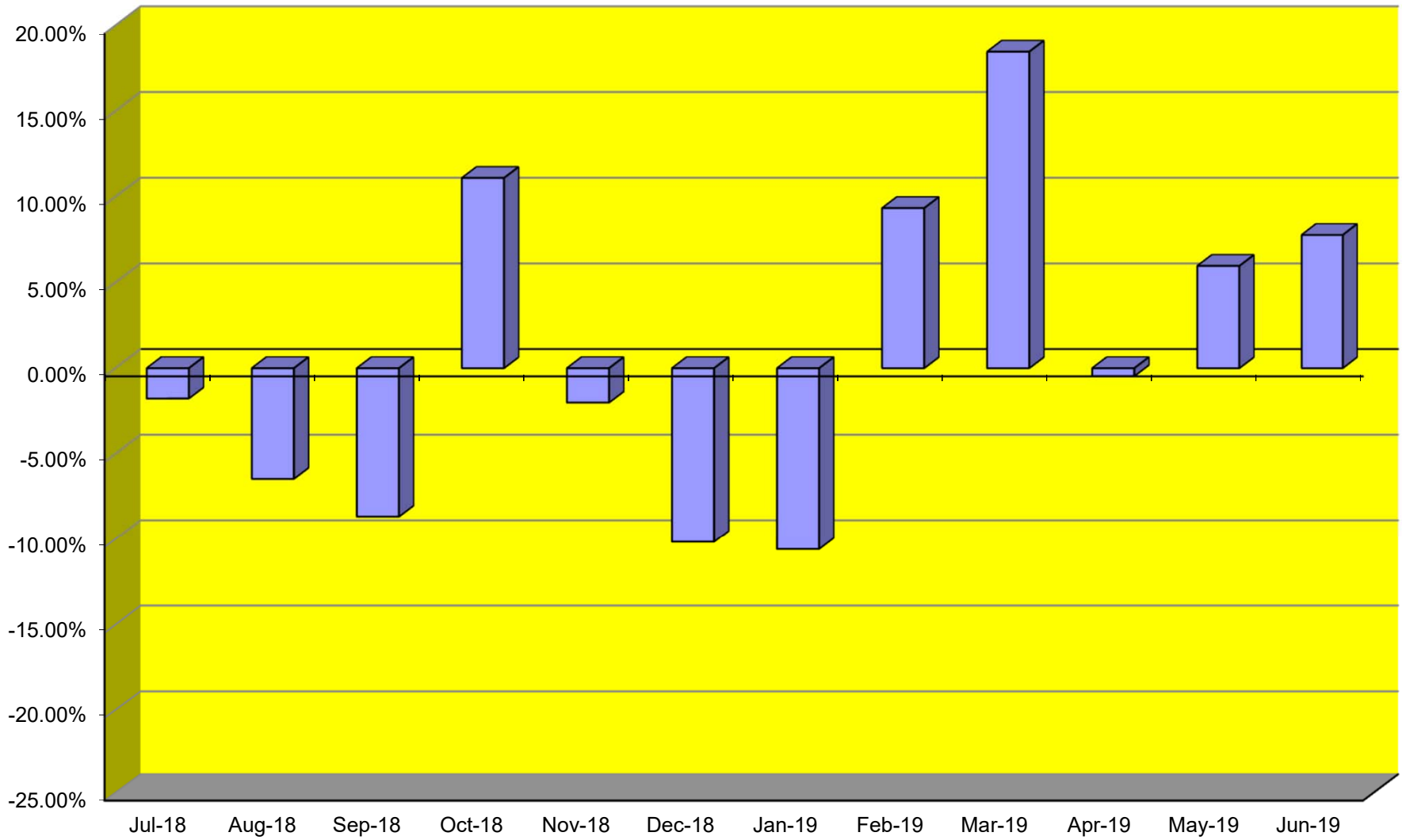
### TOTAL CARGO POUNDAGE - AUSTIN, TEXAS



Average Daily Passengers

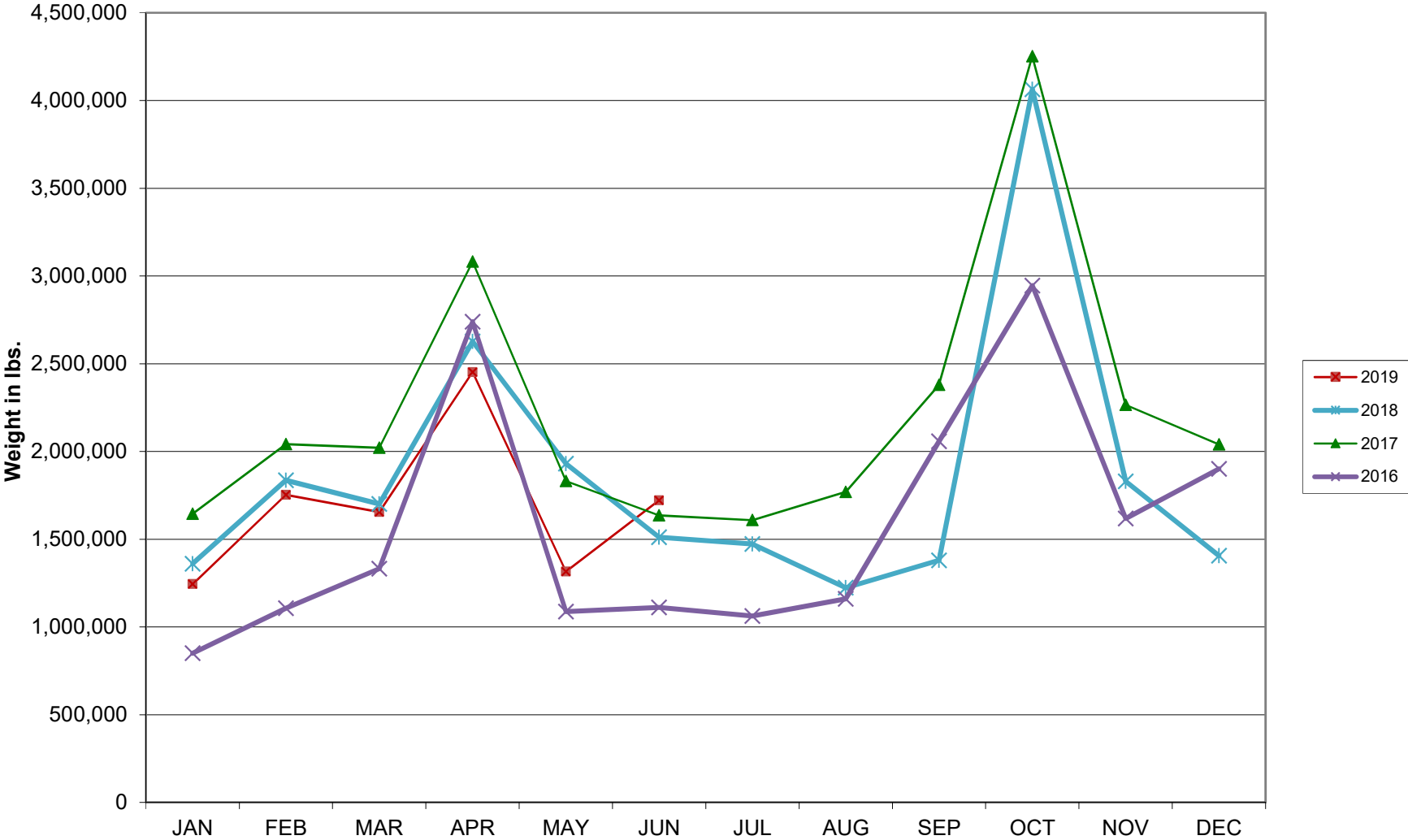


**Monthly % Change in Average Daily Passengers**

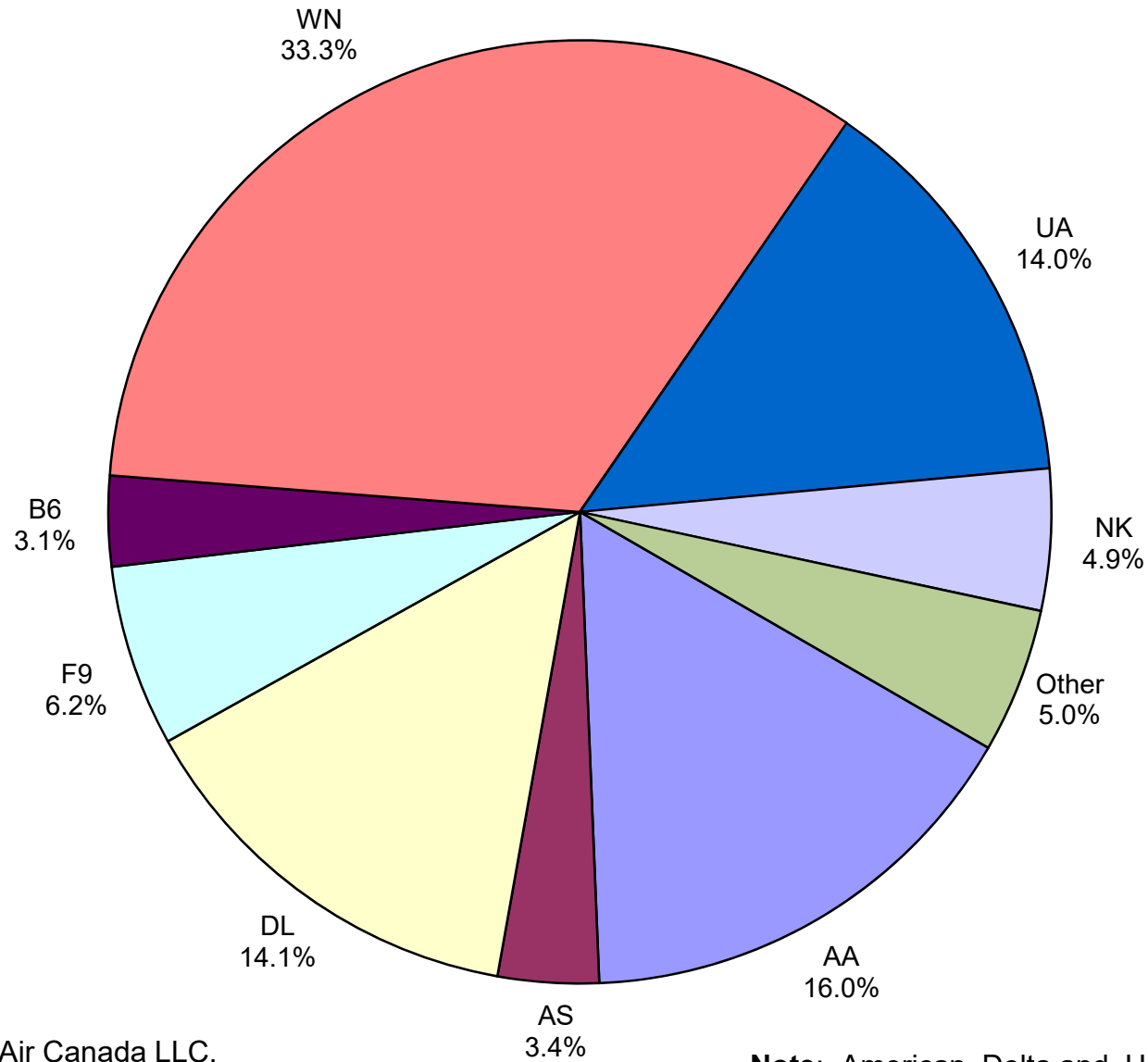




# HISTORY OF INTERNATIONAL AIR CARGO



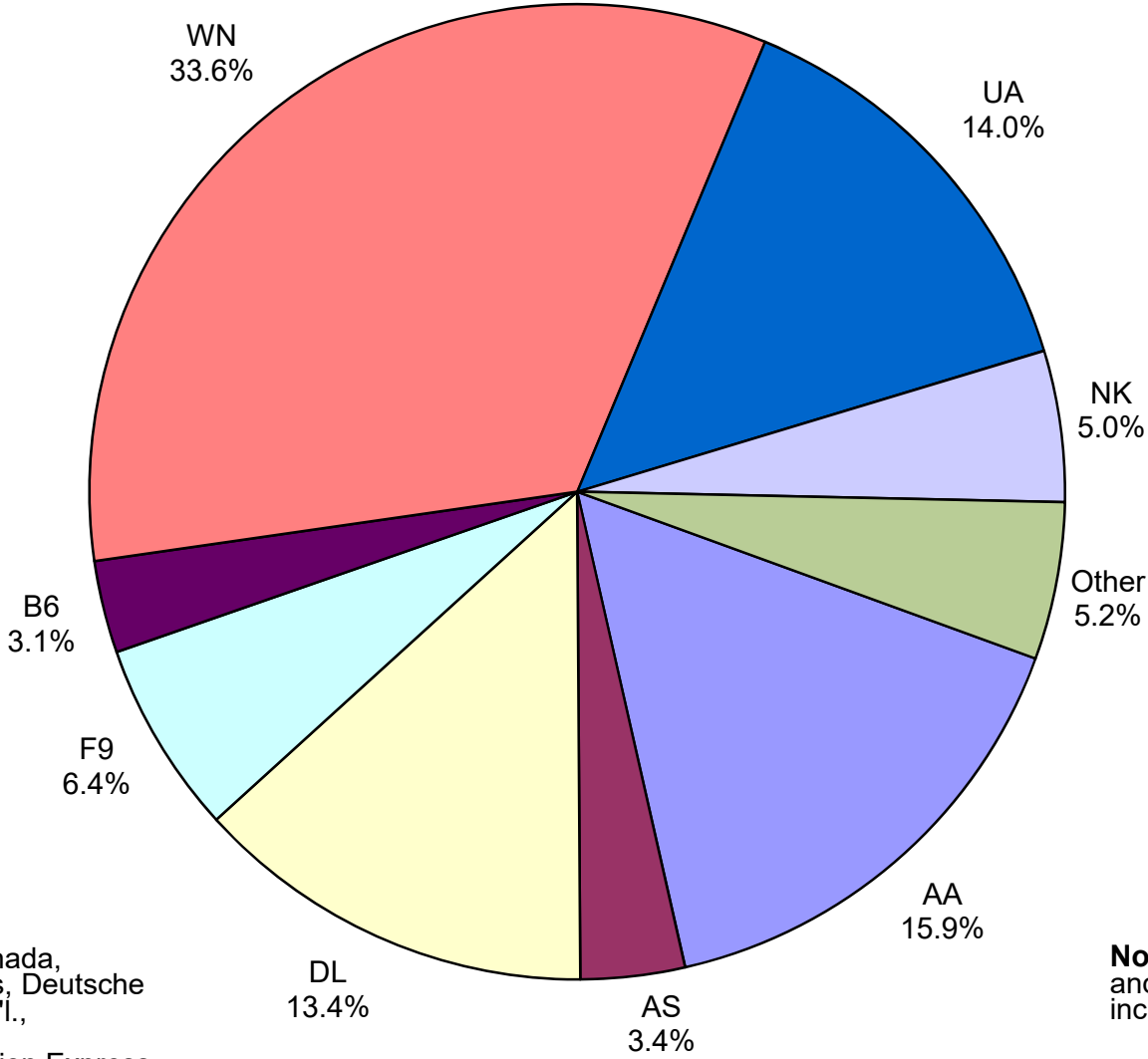
# Total Passengers June 2019



**Other:** Aeromexico, Air Canada LLC, Allegiant Air, British Airways, Deutsche Lufthansa AG, Miami Air Int'l., Norwegian Air UK, LTD, Sun Country, Vacation Express and WestJet Airlines

**Note:** American, Delta and United Airlines percentages include Affiliates.

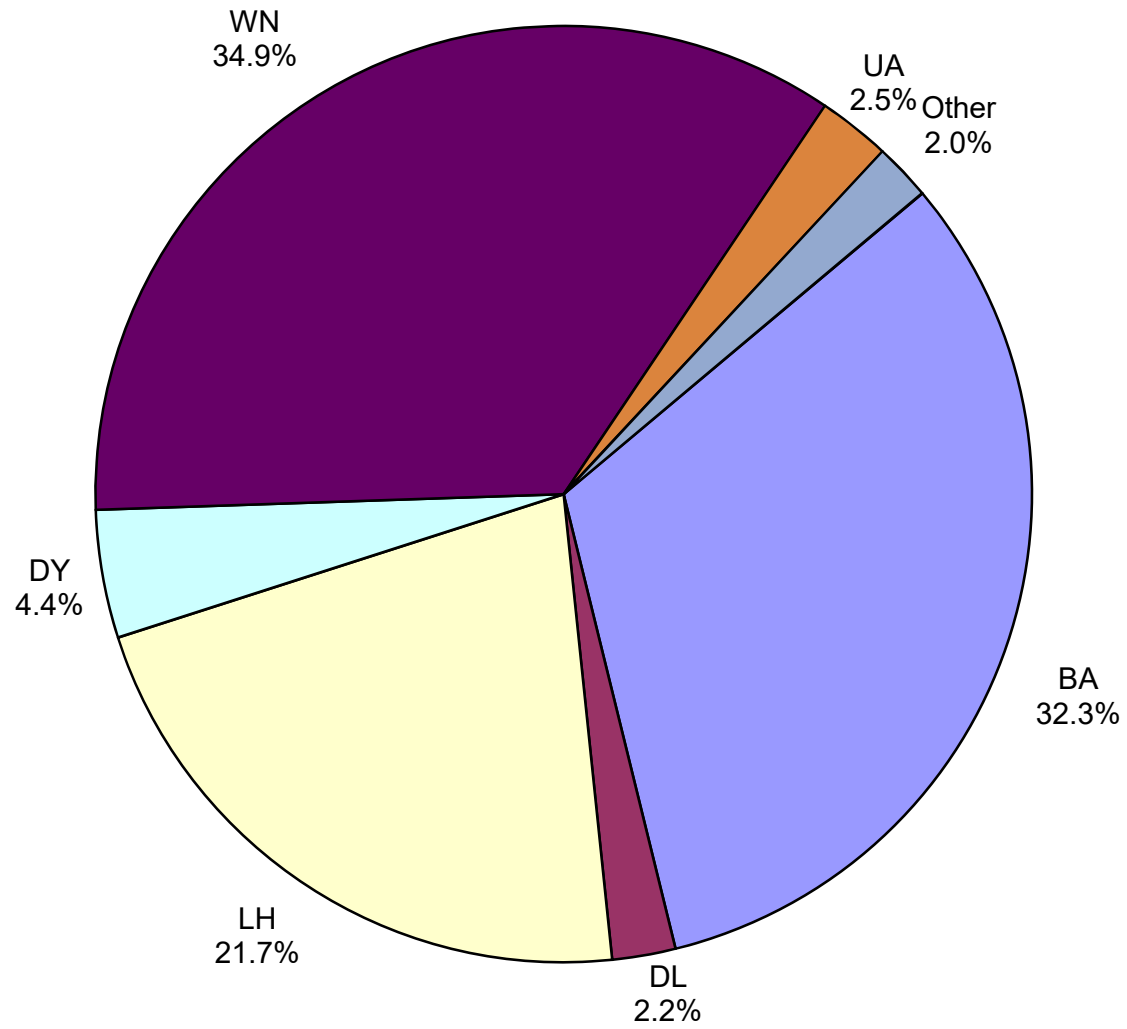
**All Passenger Carriers  
Enplaned Revenue Passengers  
June 2019**



**Other:** Aeromexico, Air Canada, Allegiant Air, British Airways, Deutsche Lufthansa AG, Miami Air Int'l., Norwegian Air UK, LTD., Sun Country Airlines, Vacation Express and WestJet Airlines

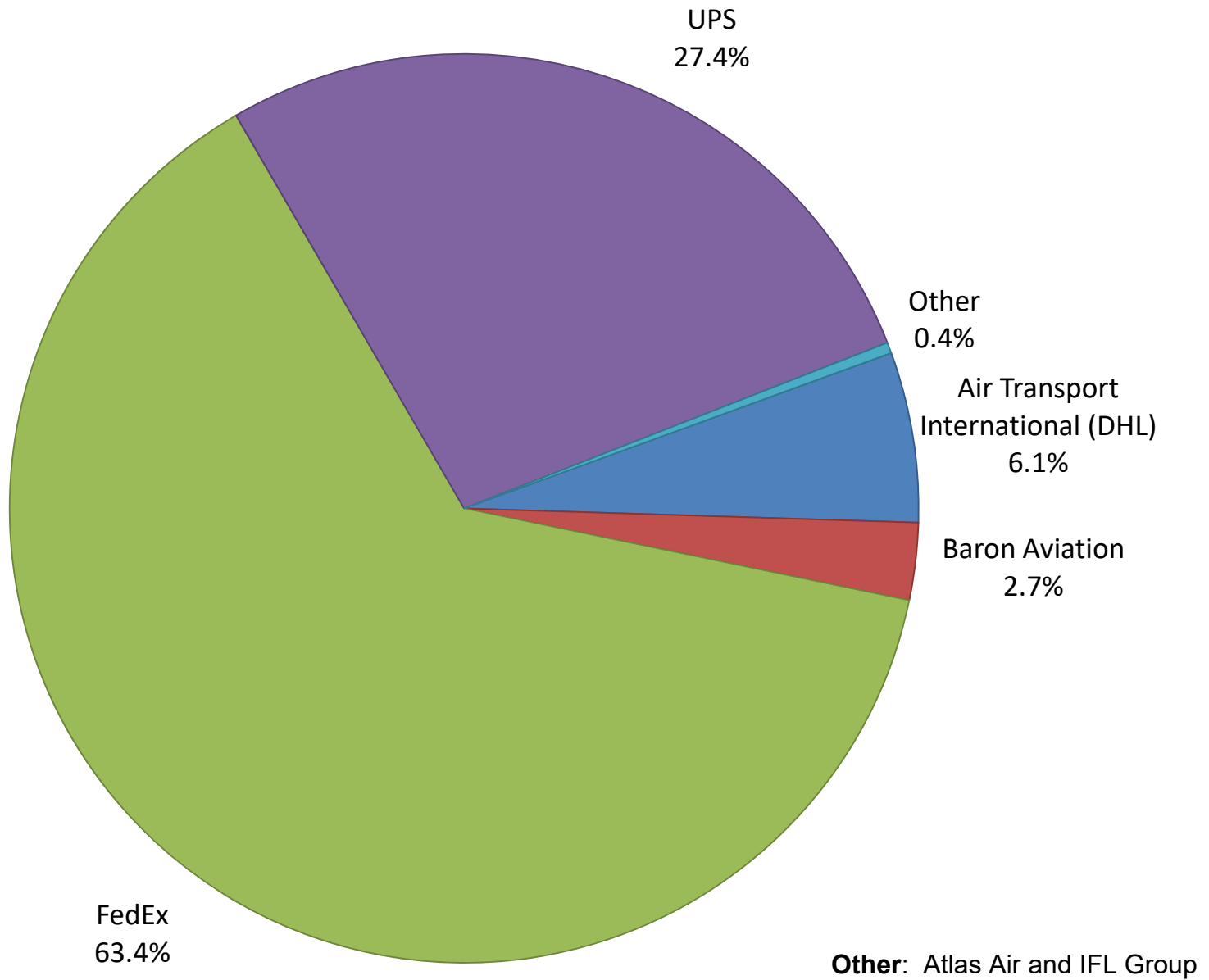
**Note:** American/US Airways, Delta and United Airlines percentages include Affiliates.

**AUS Belly Freight Market Shares  
June 2019**

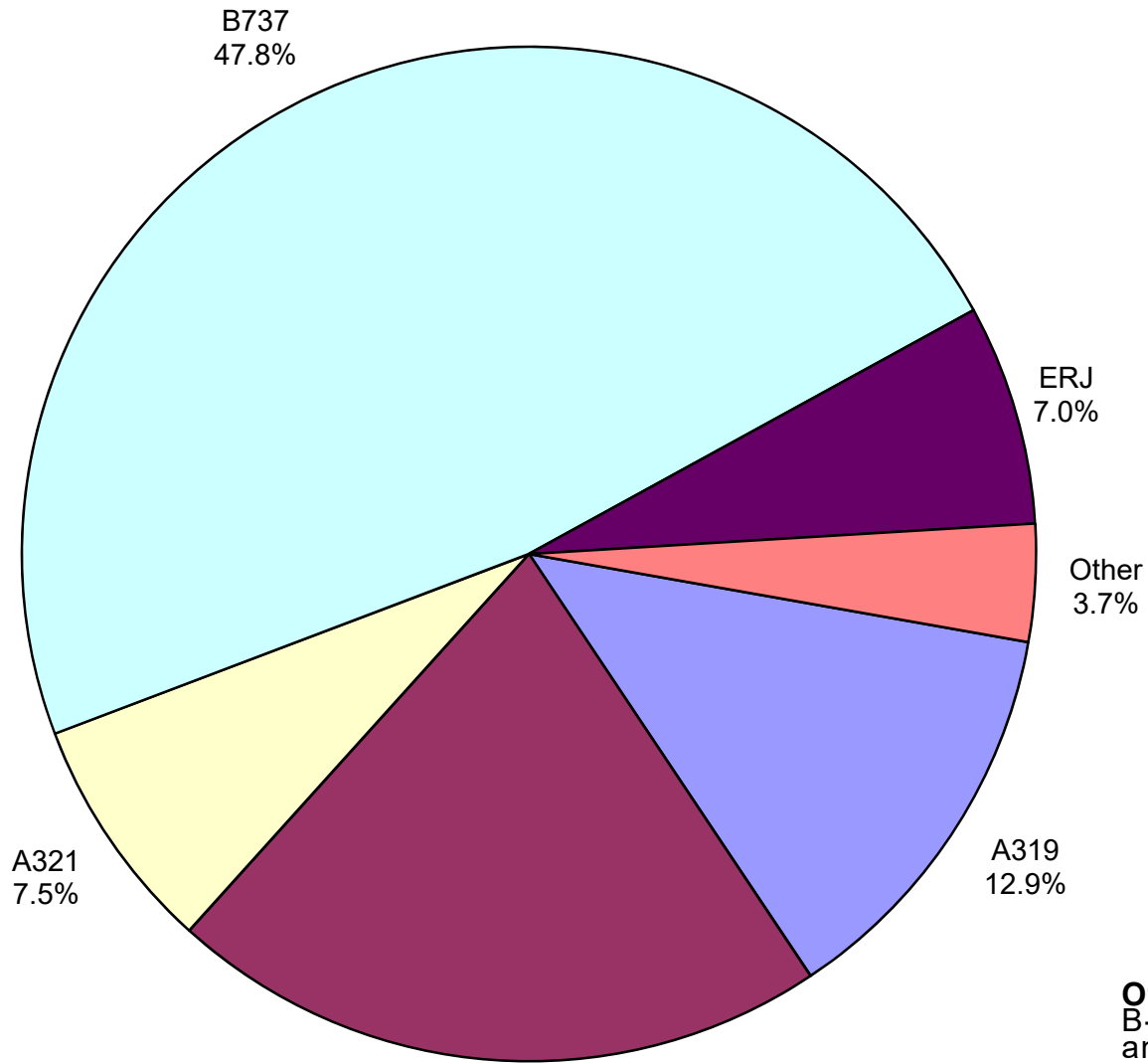


**Other** = Alaska Airlines and American Airlines

# Air Cargo Market Share June 2019

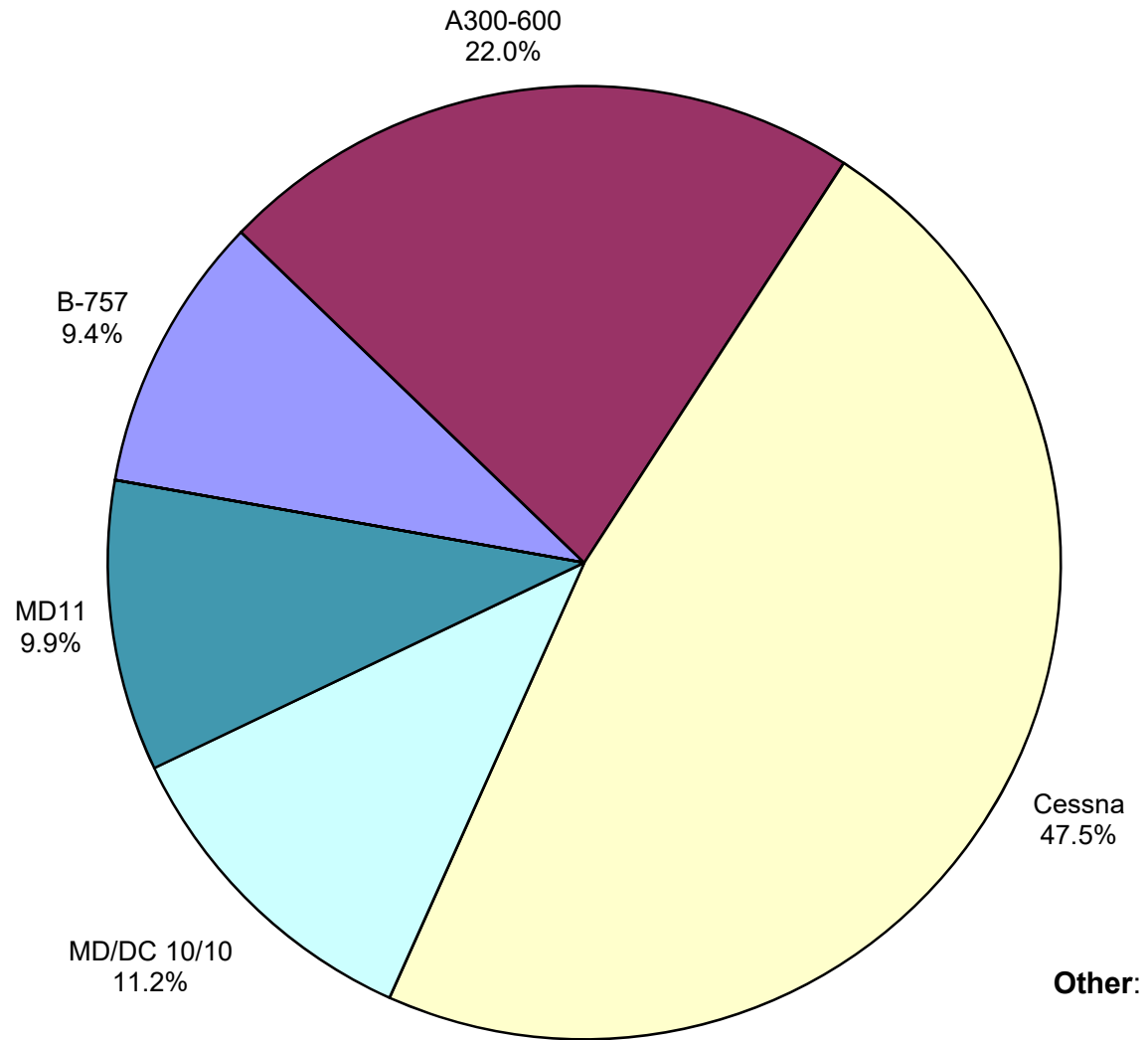


**AUS Scheduled Passenger Aircraft Fleet Mix  
June 2019**



**Other:** A330-300, B-747-400, B-717, B-757, B787-900, CRJ and EMB

**AUS Scheduled Cargo Aircraft Fleet Mix  
June 2019**



# Austin-Bergstrom International Airport

## PAX Detail Report - June, 2019

Company	06/2019	06/2018	Period		YTD 2019	YTD 2018	YTD		2019 Share	2018 Share	Share Diff
			Difference	Change			Difference	Change			
Aerovías de Mexico S.A. de C.V.	4,578	3,981	597	15.0	19,632	20,689	-1,057	-5.1	0.2	0.3	0.0
Air Canada	7,205	4,506	2,699	59.9	33,407	22,960	10,447	45.5	0.4	0.3	0.1
Air New Zealand	0	0	0	0.0	302	0	302	0.0	0.0	0.0	0.0
Alaska Airlines	55,584	50,513	5,071	10.0	298,421	266,528	31,893	12.0	3.6	3.5	0.1
Allegiant Air	23,782	32,449	-8,667	-26.7	107,494	160,737	-53,243	-33.1	1.3	2.1	-0.8
American Airlines	257,710	249,431	8,279	3.3	1,494,454	1,352,864	141,590	10.5	18.1	17.8	0.2
British Airways	18,807	17,802	1,005	5.6	91,554	80,105	11,449	14.3	1.1	1.1	0.1
Concesionaria Vuela Compañía de Aviación, S.A.P.I. de C.V.	0	1,662	-1,662	-100.0	434	7,212	-6,778	-94.0	0.0	0.1	-0.1
Condor Airlines	0	3,808	-3,808	-100.0	0	4,221	-4,221	-100.0	0.0	0.1	-0.1
Delta Air Lines	227,132	198,497	28,635	14.4	1,122,435	1,013,604	108,831	10.7	13.6	13.4	0.2
Deutsche Lufthansa AG	9,336	0	9,336	0.0	16,755	0	16,755	0.0	0.2	0.0	0.2
Frontier Airlines	100,295	133,728	-33,433	-25.0	356,169	483,528	-127,359	-26.3	4.3	6.4	-2.1
JetBlue Airways	49,729	51,315	-1,586	-3.1	280,492	294,942	-14,450	-4.9	3.4	3.9	-0.5
Miami Air International	93	0	93	0.0	869	309	560	181.2	0.0	0.0	0.0
Norwegian Air UK LTD	8,214	8,185	29	0.4	31,308	24,823	6,485	26.1	0.4	0.3	0.1
Scandinavian Airlines	0	0	0	0.0	423	697	-274	-39.3	0.0	0.0	0.0
Southwest Airlines	536,463	510,662	25,801	5.1	2,862,792	2,702,836	159,956	5.9	34.6	35.6	-1.0
Spirit Airlines	78,058	0	78,058	0.0	317,106	0	317,106	0.0	3.8	0.0	3.8
Sun Country Airlines	4,496	4,404	92	2.1	10,797	6,667	4,130	61.9	0.1	0.1	0.0
Swift Air	0	0	0	0.0	1,267	845	422	49.9	0.0	0.0	0.0
United Airlines	224,590	215,079	9,511	4.4	1,215,218	1,122,032	93,186	8.3	14.7	14.8	-0.1
Vacation Express	1,073	960	113	11.8	1,073	960	113	11.8	0.0	0.0	0.0
VIA Airlines	0	2,209	-2,209	-100.0	3,218	8,370	-5,152	-61.6	0.0	0.1	-0.1
Virgin America	0	0	0	0.0	0	11,117	-11,117	-100.0	0.0	0.1	-0.1
WestJet	2,252	0	2,252	0.0	4,111	0	4,111	0.0	0.0	0.0	0.0
<b>Report Totals</b>	<b>1,609,397</b>	<b>1,489,191</b>	<b>120,206</b>	<b>8.1%</b>	<b>8,269,731</b>	<b>7,586,046</b>	<b>683,685</b>	<b>9.0%</b>			

### Statistics Included in Report:

Domestic Passengers:	Enplaned Revenue, Deplaned Revenue, Enplaned Non-Revenue, Deplaned Non-Revenue
International Passengers:	Enplaned Revenue, Deplaned Revenue, Enplaned Non-Revenue, Deplaned Non-Revenue
International Pre-Cleared Passengers:	Enplaned Revenue, Deplaned Revenue, Enplaned Non-Revenue, Deplaned Non-Revenue
South Terminal Domestic Passengers:	Enplaned Revenue, Deplaned Revenue, Enplaned Non-Revenue, Deplaned Non-Revenue



# Austin-Bergstrom International Airport

## Summary Landing Report

### Landing Type: Total

Month	2019		2018		2017		% Change 2019 - 2018		% Change 2018 - 2017	
	Count	Weight	Count	Weight	Count	Weight	Count	Weight	Count	Weight
January	5,348	733,746,679	5,086	688,923,110	4,768	612,688,871	5.15%	6.51%	6.67%	12.44%
February	5,040	692,708,930	4,706	637,500,756	4,357	552,711,639	7.10%	8.66%	8.01%	15.34%
March	5,964	825,483,911	5,643	760,648,260	5,307	685,661,659	5.69%	8.52%	6.33%	10.94%
April	5,899	815,621,798	5,797	793,367,736	5,179	689,402,051	1.76%	2.81%	11.93%	15.08%
May	6,294	881,747,150	6,117	831,431,763	5,529	736,484,083	2.89%	6.05%	10.63%	12.89%
June	6,322	890,410,020	6,211	852,438,818	5,603	752,628,599	1.79%	4.45%	10.85%	13.26%
July			6,346	869,502,671	5,698	763,088,836			11.37%	13.95%
August			6,245	861,046,997	5,490	741,110,019			13.75%	16.18%
September			5,737	790,731,351	5,046	679,381,339			13.69%	16.39%
October			6,078	846,310,860	5,448	743,973,610			11.56%	13.76%
November			5,684	780,994,101	5,289	718,179,948			7.47%	8.75%
December			5,600	761,317,385	5,442	737,424,963			2.90%	3.24%
<b>Totals for Selected Period</b>	34,867	4,839,718,488	33,560	4,564,310,443	30,743	4,029,576,902	3.89%	6.03%	9.16%	13.27%
<b>Yearly Totals</b>	34,867	4,839,718,488	69,250	9,474,213,808	63,156	8,412,735,617			9.65%	12.62%